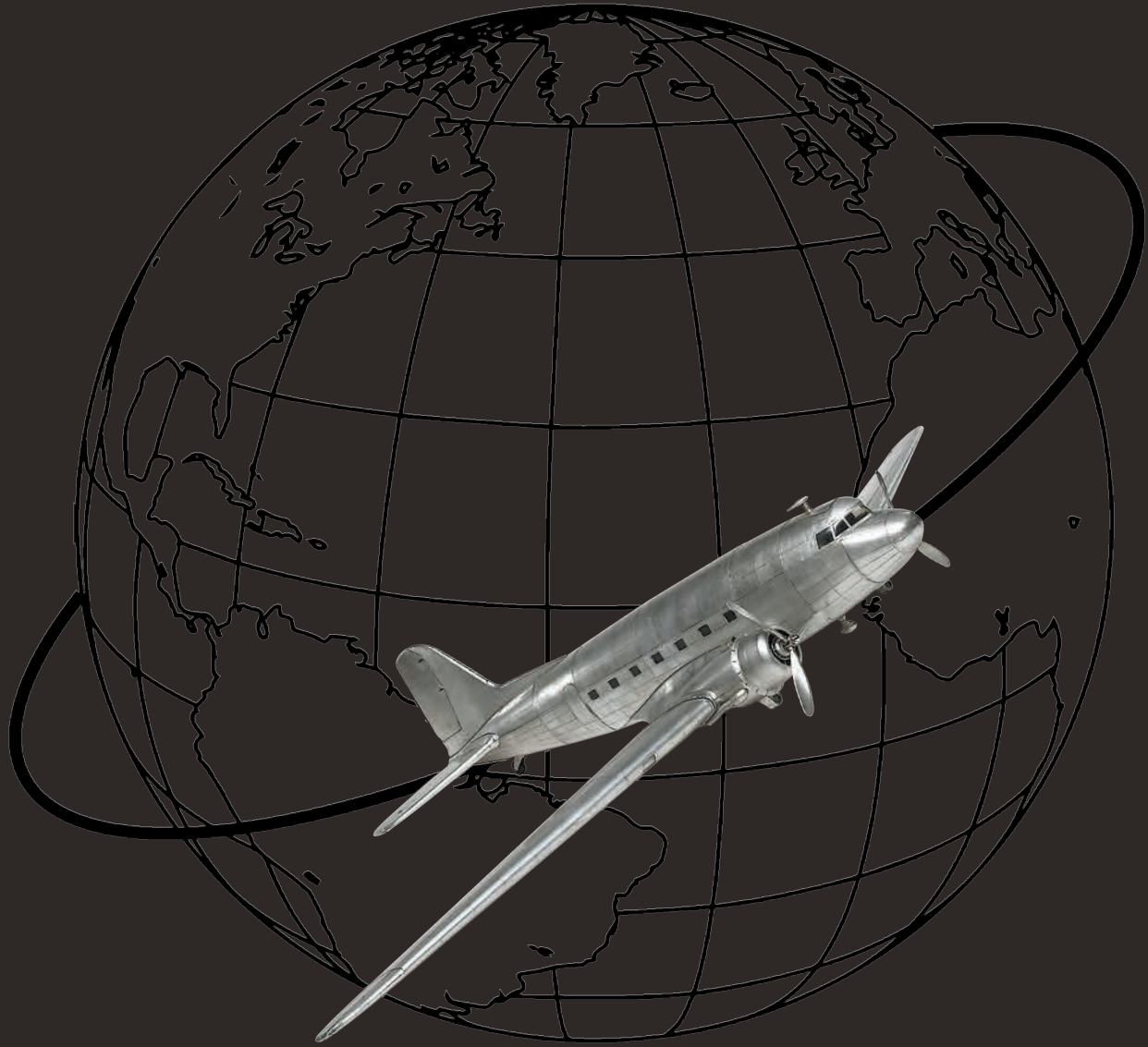


COLLECTION 2019



est. **M** 1968

AUTHENTIC MODELS

interiors with a story





est. **M** 1968

AUTHENTIC MODELS

INTERIORS WITH A STORY

Fond memories, present day pursuits, family connections, or simply an affinity with meaningful design... We all love being in spaces which reflect our warmest feelings and heartfelt passions.

Authentic Models helps you create those spaces with furniture, objects and ornaments which capture the essence of an era, an activity or an interest. Exquisitely crafted pieces of the highest quality, which bring memories to life and celebrate the values we cherish. Each one with its own reason for being. Because if something touches your soul, don't you want to see and feel its presence?

What stories should your interior be telling?



TABLE OF CONTENTS

FURNITURE	8
LIGHTING	48
AVIATION	60
NAUTICAL	84
GLOBES	96
LIFESTYLE	108
INSTRUMENTS	146
INDEX	163
CONTACT	165



ABOUT US

Character never goes out of style

Authentic Models was founded over 50 years ago by a Dutchman with an unbridled passion for celebrating the adventurous past through recreating furniture, ornaments and objects associated with travel and exploration.

Time moves on, but the human instinct to adorn the home in a meaningful way remains the same. Which is why we have further developed that original concept to incorporate a broader range of interests. Sometimes through near-exact replicas, sometimes as contemporary twists on classic objects, sometimes as new interpretations of an era's style. Always crafted from the highest quality materials, with painstaking attention to detail.

Interiors around the world are as diverse as the people who occupy them. At Authentic Models we aim to satisfy that diversity by offering items with the character and quality to complement every style. Balancing modern day surroundings with historic design elements as comfortably as we embellish traditional homes with elegant details.



FURNITURE

COLLECTION

Exquisitely crafted furniture, often with ingenious functionality, was a hallmark of the late Victorian era. These mainstays were considered so indispensable that the wealthy and famous were often accompanied by their favourite pieces when travelling in luxury steamers and staying in grand hotels. Inspired by these much-loved items, Authentic Models has created distinctive accent furniture which brings their unique charisma into modern day homes. Attentively finished with French polishing, brass fittings and leather features to replicate the distinctive looks, tactility and aroma of the originals.





Stateroom Bar, IVORY
MF078 M. 59 x 147 x 62cm, 23.25 x 58 x 24.5"



Stateroom Bar, BLACK
MF078B

Made in the style of turn-of-the-century travel trunks. Solid brass hardware and bridle leather accoutrements complete a hand-built large trunk on sturdy wheels. A multitude of drawers, two serving trays, racks for both horizontal and vertical bottles. Mirror and foldout work shelf. Taking out the shelf unit on the right frees up a removable game board.

LUXURY IS IN EACH DETAIL



Stateroom Bar, GUNMETAL GREY
MF078G



Stateroom Bar, SILVER
MF078S



Stateroom Bar, NAVY
MF078N Available Q1-2019





In bygone days travelling was for restless souls with matching bank accounts and a yearn for romance. Professional brass hardware, brass locks and keys, steamed cherry wood bent slats. Complete with hand turned legs to serve a further life as a coffee table. Honey finished wood inside.

Stateroom Trunk, IVORY
MF040 M. 82 x 45 x 58cm, 32.25 x 18.25 x 22.75"



Stateroom Trunk, SILVER
MF040S



Stateroom Trunk, BLACK
MF040B



Stateroom Trunk, GUNMETAL GREY
MF040G

Victorian luggage was made to ship by train, steamer, and horse drawn coach. Trunks were sent ahead and handled exclusively by porters. The tall, square shape of our 'end table' trunk was designed to fit easily into tight cabins during extensive travel. Enjoy the flavor of a bygone age of luxury.



Stateroom End Table, IVORY
MF079 M. 53 x 45 x 56cm, 21 x 17.75 x 22"



Stateroom End Table, SILVER
MF079S



Stateroom End Table, BLACK
MF079B





Stateroom Drawers small
 MF160 M. 53 x 45 x 65.5cm, 22 x 18.75 x 27.3"
 Available Q1-2019



Stateroom Drawers large
 MF159 M. 53 x 45 x 114cm, 22 x 18.75 x 34.2"
 Available Q1-2019

Wealthy Victorians didn't pack light when travelling by luxury steamer! They therefore created beautiful wheeled trunks to bring clothing and other possessions on board. In a new functional twist, we've turned our replica trunks into chests of drawers. So you can bring a taste of the luxury steamer lifestyle into your home via a stylish storage solution.

You want something solid. Lived in and comfortable. Warm and rich looking. Soft and easy to the touch as if waxed and polished by generations of housemaids. Boxes to hold documents and treasures. Brass campaign corners to survive damage during challenging moves across the country or even oceans. After all, our furniture is made to travel well.

3 stacked units with tray

M. 50 x 30 x 128cm, 19.75 x 11.75 x 50.5"



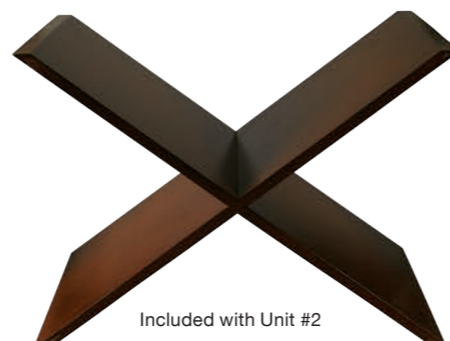
Single Serve Tray

FF107 M. 45.5 x 25.5 x 6.5cm, 18 x 10 x 2.5"



Glass Unit, #1

MF212 M. 55 x 55 x 55cm, 21.75 x 21.75 x 21.75"



Included with Unit #2



Bottle Rack/Bookcase Unit, #2

MF211



Bottle Rack Unit, #3

MF210



Six-in-One

FF101 M. 22.75 x 34 x 22cm, 9 x 13.5 x 8.75"



Small Tray

FF108 M. 36.5cm x 28 x 5cm, 14.5 x 11 x 2"

The campaign serving tray in lustrous French finish and brass-bound corners.



Butler's Tray

FF102 M. 63.5 x 40.5 x 5cm, 25 x 16 x 2"



Casablanca Bar, Black

MF047B M. 104 x 52 x 110.5cm, 41 x 20.5 x 43.5"



Inspired by early 19th C. travelling closets, AM offers a highly practical trunk reproduction called the Armoire. It features shelves and drawers to store and display. Hand sewn bridle leather straps and brass hardware support a foldout shelf for use as workspace. Inset shelf-unit with a removable mirror stored in the back. Fun, decorative and practical. Locks with keys.



Sommelier Put-Away
MF127 M. 15 x 39cm, 6 x 15.25"

Stateroom Armoire, BLACK
MF077B M. 60 x 50 x 130cm, 23.75 x 19.75 x 51.25"



Stateroom Armoire, IVORY
MF077



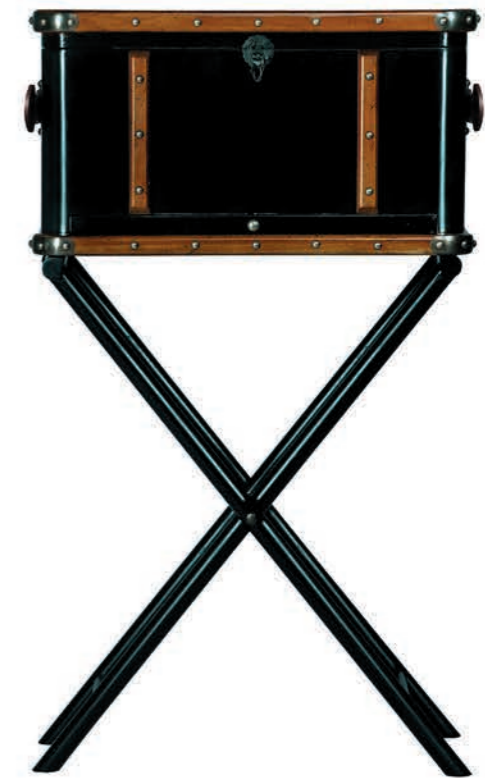
Picnic box Victoria
MF162 M. 45 x 26 x 40cm, 18.75 x 10.8 x 16.6"
Available Q1-2019
Accessories are not included



Focusing on the sociable side of travel, we've reinvented the classic Victorian trunk as a picnic hamper for drinks. Stock yours up and imagine yourself as a British aristocrat of old, entertaining dear friends in the countryside. In two different versions: a small on-the-go one and a larger version with foldable legs.



Picnic box Ceylon
MF161 M. 60 x 25 x 103.5cm, 25 x 7.3 x 43.1"
Available Q1-2019
Accessories are not included

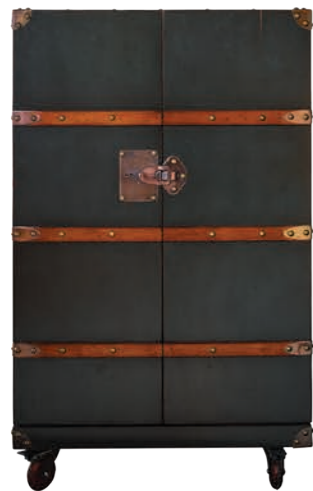




Step off the beaten path and decide to create your own private club. The smell of leather, the feel of rich wood, the warm glow of subdued lighting. Act out that secret urge to be a bartender at Harry's Bar. Just wheel out this upscale serving station of superior drinks. Pull glasses from within, juggle bottles, break the ice and shake but do not stir.

Grand Club Trunk Bar
MF134 M. 54 x 127 x 48cm, 21.25 x 50 x 19"

CALL ME CLASSY



Polo Club Bar, GUNMETAL GREY
MF114G M. 60.5 x 98 x 55cm, 24 x 39 x 22"

Polo Club Bar, BLACK
MF114B

Hailing from the Belle Epoque, an era when armies of stewards and porters used to wheel trunks from the Wagons-Lits train to a waiting transatlantic steamer. Those were the days! Big enough for pur-sang bartending but small enough to fit into a chic studio. Wood with leather accents and bronze hardware. Varnished wood slats for protection.





Bombay Box
MF111 M. 56.5 x 65.5 x 40cm, 22.25 x 26 x 15.75"

The Camel Fair is held next to the temple of Savitri in Pushkar, Rajasthan. Once a year over 80,000 camels, cows, sheep, goats, and horses, some 200,000 merchants, farmers, bandits, thieves, and a variety of human existence gather to find enlightenment and/or commerce. This is where Mary and John Newby from Arkaroola (N.S.Wales) went every year in the Twenties to select camel breeding stock for the Australian outback. Bringing along a stock of fine wines like Château Soutard and bottles of Vieille Reserve Armagnac 1883 to survive hardship, they strapped campaign boxes onto their Bentleys and headed to the desert for a week or so to live in tents.



Bombay Box, 2-TONE HONEY
MF113



War Chest
MF121 M. 56.5 x 65.5 x 40cm, 22.25 x 26 x 15.75"

Treasure chests of old were iron banded and fitted with rings to chain them safely to the castle floor or travel coach. Later, in less violent times, stealth became de rigueur to hide valuables. This trunk fools the eye as it allows you to stash things in an unexpected place...



Grandmaster's Box
MF112 M. 45 x 66 x 45cm, 17.75 x 26 x 17.75"

There's more than just chess to this coolly refined little game table. Game tables made for Armies on the move always served multiple functions: end table, shaving bench, breakfast plateau, you name it. Two drawers which can hold chess and checker game sets. (Game pieces GR021 are not included.)

Designed and built to withstand the tribulations of an Imperial Army on campaign. British and French colonial furniture was designed and made to be indestructible.



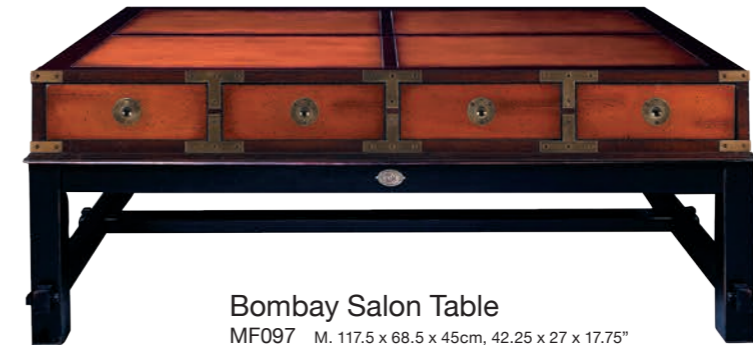
Gallery Globe Table
MF123 M. 83.5 x 110.5 x 67cm, 33 x 43.5 x 26.5"

This multi-purpose piece has a drawer and a large tray, easily accessed by pulling out from either front or back sides.



Coffee Table/Bench
MF146 M. 98 x 43 x 45.5cm, 38.5 x 17x 18"

In the rich tradition of 19th C. Army and Navy furniture makers; a coffee table on a stand that knocks-down for easy transport and storage. Eight drawers allow for storage of books, mail, keys, and ephemera. Always practical, decorative and never boring. Drawers open on both sides.



Bombay Salon Table
MF097 M. 117.5 x 68.5 x 45cm, 42.25 x 27 x 17.75"





Game Table
MF034 M. 120 x 62.5 x 45cm, 47.25 x 24.75 x 17.75"



Bring out the laughter, drama and drink. Go for check or broke. If loaded dice and backgammon are more to your taste, change the board. Or unearth the boxed renaissance dominos and pull out the green board, Domino, Poker, Monopoly. When not in the mood for games, flip the board and go for cherry wood top or faux leather. A world of entertainment at your fingertips. Park rule books and cartons on the lower level.



Game Table, BLACK
MF020 M. 80 x 80 x 45cm, 31.5 x 31.5 x 17.75"



Game Table, IVORY
MF005 M. 80 x 80 x 45cm, 31.5 x 31.5 x 17.75"

THE GAME IS ON



Pull up a comfy chair and select your game of choice. Chess, backgammon, poker, or just a game of cocktails? Shipped disassembled, it makes for easy assembly, but also disassembly and storage. Brass details make this table an indestructible creation for generations of use.



Casino Royale Game Table
MF092 M. 82.5 x 82.5 x 76cm, 32.5 x 32.5 x 30"

Victorians called this style of table a cocktail table. The mariner's star brings to mind a First Class lounge. Exceptional artistry is used to apply the tabletop intarsia. Selected, contrasting veneers are expertly cut and assembled into a truly nautical table.



Mariner Star Table
MF085 M. 55 x 55 x 55cm, 21.75 x 21.75 x 21.75"



87cm, 34.25"

66cm
26"



56.5cm
22.25"

British Butler Table
CF003F





Toledo Desk

MF148 M. 152 x 56.5 x 78.5cm, 60 x 22.25 x 31"
(with extension)
119.5 x 56.5 x 78.5cm, 47 x 22.25 x 31"
(with extension folded down)

This desk is equipped with a folding table top to let it fit in any corner. Richly French finished in black and honey. Drawers to hold documents and treasures.



Travel Desk 'Madras'

MF056 M. 120.5 x 55 x 78cm, 47.5 x 22 x 30.75"

You want something solid. Lived in and comfortable. Warm and rich looking. Soft and easy to the touch as if waxed and polished by generations of housemaids. Drawers to hold documents and treasures. Brass campaign corners to survive damage during challenging moves across the country or even oceans. Our furniture is made to travel well.



Navigator's Desk, IVORY

MF011 M. 140.5 x 70 x 78cm, 55.5 x 27.5 x 30.75"



Navigator's Desk, BLACK

MF022 M. 140.5 x 70 x 78cm, 55.5 x 27.5 x 30.75"

Travelers and seafarers of yore had to be resourceful in order to survive. Desks on board ships had to be cleared and stowed at a moment's notice. Things had to be multi-functional. In the case of our desk, the two supports could act as steps into the navigator's bunk, or to mount a camel, whichever came first. The desktop, complete with drawers and brass bound, could act to stop musket bullets when under fire. Faux leather top, hand rubbed French finish, somewhat beat-up; proof of its many voyages and colorful history.



Navigator's Desk, GUNMETAL GREY

MF022G M. 140.5 x 70 x 78cm, 55.5 x 27.5 x 30.75"



Valet de Chambre

MF125 M. 59 x 63.5 x 121.5cm, 23.25 x 25 x 48"

The 'Valet de Chambre' was traditionally a personal servant for the master of the house in Victorian times. It's hard to think of a more effective valet than our valet desk, which will never be tired and can't speak back. Easy to transform into a library unit or a living room support unit holding essentials.



Captain's Desk, IVORY

MF013 M. 22.75 x 34 x 22cm, 9 x 13.5 x 8.75"



Captain's Desk, BLACK

MF014 M. 22.75 x 34 x 22cm, 9 x 13.5 x 8.75"

The captain's desk was usually tailor made to offer maximum comfort and space in a minimal floor area. Drawers to house the crew's papers, sealed sailing instructions, logbooks, charts, instruments and a pair of flintlock pistols. Brass corners to protect from damage when being moved around. Sturdy construction, made of cherry and maple with leather insert top.



Florence Desk

MF157 M. 87 x 50 x 84.5cm, 36.25 x 20.8 x 35.2"
Available Q1-2019

In homage to the Victorian travellers who went to great lengths to attend to their correspondence while on the move, we've created this small fold-away desk. A charming piece that's handy in the home as it's small enough to fit almost anywhere and easy to pack up and store when not in use.



Savannah Desk

MF156 M. 90 x 50 x 81cm, 37.5 x 20.8 x 33.75"
Available Q1-2019

Admirers of the travel trunks used by wealthy travellers will appreciate this administration-related take, in which we've created a 'pack-and-go' desk with the same design features.



Campaign Cabinet Desk

MF143 M. 80 x 47.5 x 117cm, 31.5 x 18.75 x 46"

The sturdy campaign box, after many travels, comes to rest at journey's end. The desk's hinged front opens to reveal a spacious desktop with compartments and drawers.



Palmer Desk

MF158 M. 87 x 50 x 84.5cm, 62.5 x 18.75 x 34.2"
Available Q1-2019

High ranking officials have a duty to prepare reports from wherever they happen to be in the world. During the golden age of travel, when trips were personalized to the extent of bringing your own furniture, we envision a desk such as this, with its foldable legs, would have been indispensable to army officers and other public figures.



On-the-Go Desk

MF145 M. 45 x 70 x 73cm, 17.75 x 19.75 x 28.75"

This Leaning Desk is a clever one. Its narrow profile is perfect in limited quarters. The writing surface easily slides down against table legs for compact storage. Lean it closed against a wall, at-the-ready for a small work project.



Campaign Files, BLACK

MF039 M. 45 x 70 x 73cm,
17.75 x 19.75 x 28.75"

Filing cabinets are essentially boring entities. Choice-wise there's not much out there. Grandeur and elegance is not associated with the domain of organization. Stashing your files in a Hermès backpack or a vintage Louis Vuitton trunk, while certainly fancy, is not overly accessible. This cabinet is made to be handed down through generations.



Cape Cod Locker, BLACK

MF061 M. 40 x 35 x 120cm,
15.75 x 13.75 x 47.25"



Porthole Cabinet

MF027 M. 92 x 46.5 x 153cm, 36.25 x 18.5 x 60.25"

Famous yachtsmen sailing from from the USA were surprised at the lack of locker rooms, showers and docks when visiting the Royal Yacht Clubhouse at Cowes, England. Even a bar was absent while the cabins and staterooms of their visiting yachts were resplendent with grandeur. Our beautiful cabin cabinet with large porthole windows would probably have pleased them.



Caddie Cabinet

MF120 M. 42 x 46 x 104cm, 16.75 x 18 x 41.75"

Our love affair with Curiosity Cabinets took a side trip to an area of special interest, the realm of the golfing green. Its somewhat diminutive size belies its functionality, with drawers for gloves, shoes, caps, and other attire. Display golf ball inventory or champion balls for eternity. Use the top for trophies that made history!



Collectors Cabinet II, Doors

MF070B M. 35.5 x 55.5 x 145cm, 14.8 x 23.13 x 60.42"



Secretaire 'Grand Hotel'

MF063 M. 80 x 49 x 108.5cm, 31.5 x 19.25 x 42.75"

This desk holds some serious surprises and secrets so don't be fooled by its elegant appearance. Two stacked units offer campaign style compact storage. No wasted space here! At the same time you access a secret document box in the back. Big enough to store stacks of banknotes or someone's first love letters.





Cambridge Bookcase
MF095 M. 122.5 x 96 x 205.5cm, 48.25 x 37.75 x 81"

This bookcase features a striking library ladder and offers a multitude of large and small drawers. It is designed to fit in rooms large and small and carries solid bronze, hand rubbed and polished hardware. Hard to find this detail and finish even in antique ones. Pull out the shelves to showcase the latest addition to your collection or just the book you want to read next.



Kunstammer Cabinet
MF088 M. 122.5 x 54 x 205.5cm, 48.25 x 21.25 x 81"

Kunstammer Cabinets date from the Renaissance to the Age of Enlightenment. Every noble, titled, moneyed or learned gentleman of the day was an assumed collector of unique and unusual objects. This culturally collective behavior was a favored topic of conversation. Individuals, as well as complete expeditions, were fitted out and sent to remote corners of the globe to collect. Modern collectors don't send out expeditions but prefer to travel and collect the exotica from faraway lands themselves. This showpiece will be the king of the library or living room.



Ritz Lobby Cabinet, BLACK
MF051 M. 92.5 x 41 x 156cm, 36.5 x 16.25 x 61.5"

On the old Queen Juliana ferry boat from Harwich to Hook van Holland, traditional 1930's luxury still trumped 60's economy. The purser, gently smiling like an urbane Dutch bishop, was seated behind an oversized desk. At his back showed an equally large cabinet with spaces to hold keys, mail, fresh newspapers, and the occasional telegram brought in from the vessel's telegraph room.



Ritz Lobby Cabinet, HONEY
MF050 M. 92.5 x 41 x 156cm, 36.5 x 16.25 x 61.5"



Kunstammer Console
MF096 M. 113 x 54 x 76cm, 44.25 x 21.25 x 30"

Collectors want a cabinet that stores and appeals in its own right and this console is definitely multi-functional. Enjoy its many drawers and fun pull-out shelves.



Alchemist's Bookcase
MF116 M. 110.5 x 50.5 x 100.5cm, 43.5 x 19.75 x 39.75"

Our most unique bookcase as of yet! With plenty of space for items you want to display as well as for those you don't... Two inconspicuous side panels hold the secret!



Library Ladder
MF068 M. 50 x 45 x 245cm, 19.75 x 17.75 x 96.5"



Library Ladder,
GUNMETAL GREY
MF068G



Library Step-up
MF155 M. 50 x 45 x 123cm, 19.75 x 17.75 x 40.2"



**THE ONLY THING
YOU HAVE TO
KNOW IS THE
LOCATION OF
THE LIBRARY**

These Library Ladders are easily installed. The top and bottom have brass sleeves on all four sides, flush inlaid brass hardware and hefty bronze drawer handles. This bookcase will survive centuries.

This small and elegant bookcase provides both a storage drawer and display shelves. Can also be used as a bed side table.



Butlers Buddy,
GUNMETAL GREY
MF140G



Butler's Buddy, HONEY
MF140 M. 51.5 x 47 x 104cm,
20.25 x 18.5 x 41"

The Butler's Buddy is designed for men who like fashion and take care of their gear. Made for looks but also practicality. That's why women want their own too. In black and gun metal grey.





The Handbook for Travellers in India, Burma and Ceylon Edition 1874, carries extensive instructions for the minimum amount of clothing, weapons, tents and food needed for an extensive voyage in the tropics. Boxes, trunks and chests were packed and hauled on exploration, hunting, or military expeditions that traversed mountains and deserts. Documents, books and libraries, games and tables, folding chairs and exquisite foods from purveyors to the Queen were taken along. All this had to be packed and unpacked every single day. The design and manufacture of furniture fitting all these conditions and ways of travel was both an art and a science.



Campaign Stacking Unit, DESK
MF207

80cm	40cm
31.5"	15.75"
	35cm
	14"



Campaign Stacking Unit, SHELF
MF203

76cm	2.5cm	32.5cm
30"	1"	13"



Campaign Stacking Unit, SMALL
MF206

80cm	28cm
31.5"	11"
	39cm
	15.5"



Campaign Stacking Unit, DOORS
MF202

80cm	40cm	39cm
31.5"	15.75"	15.5"



Campaign Stacking Unit, TRAY
MF205

37.5cm	16cm	31.5cm
14.75"	6.5"	12.5"



Campaign Stacking Unit, OPEN
MF201

80cm	40cm	39cm
31.5"	15.75"	15.5"



Campaign Stacking Unit, DRAWERS
MF204

76cm	12cm	33cm
30"	4.75"	13"



Campaign Stacking Unit, BASE
MF200

80cm	8.5cm	33.5cm
31.5"	3.5"	13.25"



Captain's Stacking unit large, BLACK

MF216 M. 40 x 35.5 x 119cm,
16.6 x 14.8 x 49.5"

Available Q1-2019

Captain's Stacking unit medium, BLACK

MF215 M. 40 x 35.5 x 81cm,
16.6 x 14.8 x 33.75"

Available Q1-2019

Captain's stacking unit small, BLACK

MF214 M. 40 x 35.5 x 43.5cm,
16.6 x 14.8 x 18.1"

Available Q1-2019



Victorian travel trunks are the inspiration behind these freestanding shelf units we've created for books and other objects. A perfect complement to our many travel-related items. Available as a modular set or as individual pieces.

Bosun's Gig, WHITE

MF036W M. 68 x 30.5 x 185cm, 27 x 12 x 73"

Gigs were very useful when in port or moored outside. Easy to lower overboard, needed minimum crew, and they could be quickly dispatched. Ours are not seaworthy but they most certainly look like the real thing, adding some flair and atmosphere to any room. In honey French finish with black or off white detail.



Bosun's Gig

MF036 M. 68 x 30.5 x 185cm, 27 x 12 x 73"

Dory Bookshelf/Table with Glass

WO102 M. 119 x 49.5 x 40cm,
46.75 x 19.5 x 15.75"

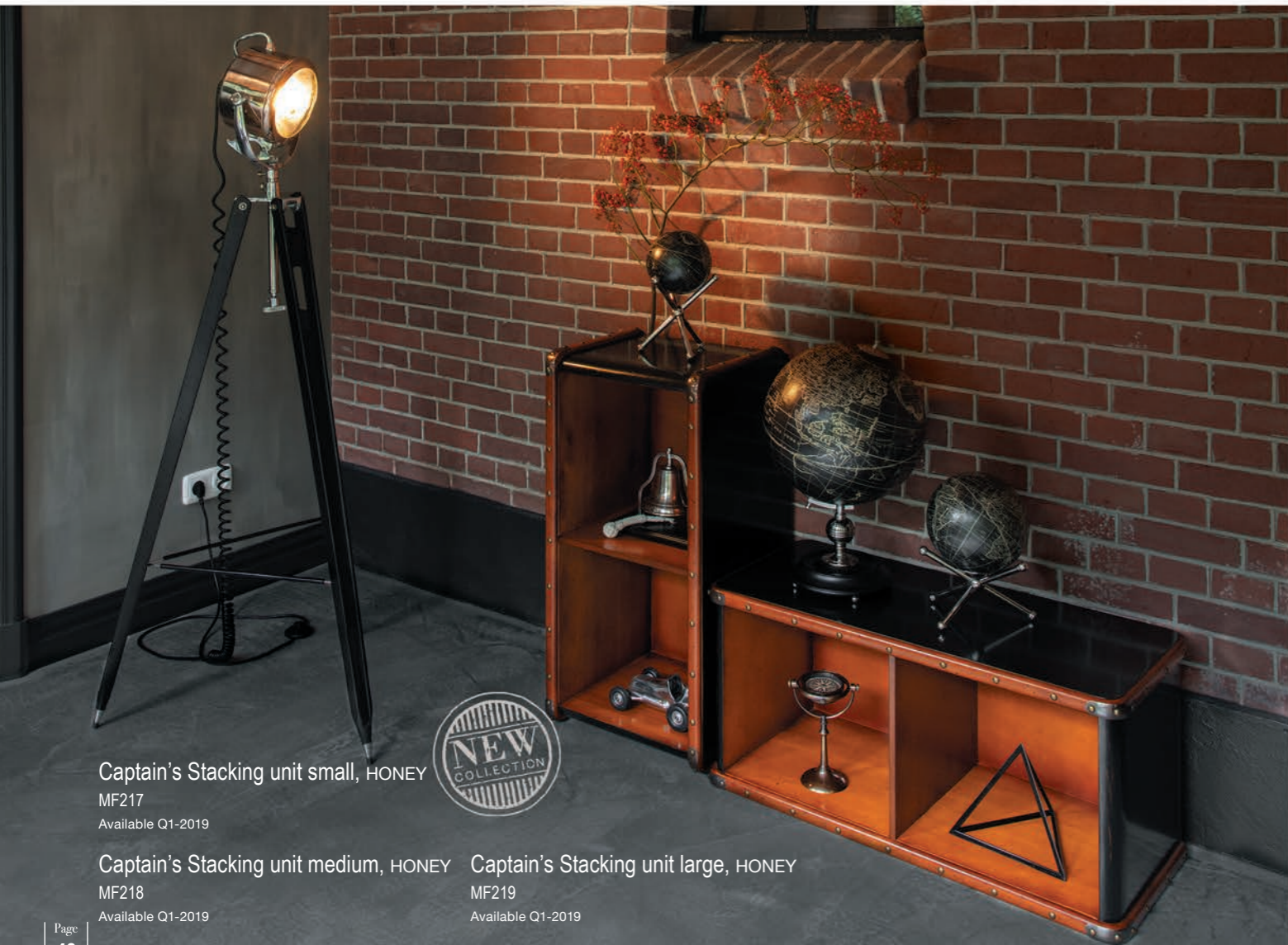
DOUBLE FUNCTION



Man of Eight Bookcase

MF007 M. 46.5 x 25 x 216.5cm, 18.25 x 10 x 85.25"

Racing eights is an Olympic sport, upper class, academic and only accessible to the very smart and highly athletic. These long, narrow and fast wooden racers were cut up in sections when retired. Transformed into bookcases they lined the halls of famous Universities.



Captain's Stacking unit small, HONEY

MF217

Available Q1-2019

Captain's Stacking unit medium, HONEY

MF218

Available Q1-2019

Captain's Stacking unit large, HONEY

MF219

Available Q1-2019





Leather/Canvas Chair
MF151 M. 55 x 56 x 89cm, 21.75 x 22 x 35"



Bridle Leather Campaign Chair
MF122 M. 55 x 56 x 89cm, 21.75 x 22 x 35"

Originally designed by London Army & Navy purveyors for Imperial Army officers on the move. Legs and frame rolled up inside the canvas seat or leather. Then in the 1920's taken by European settlers of the Argentina pampas, it became the gaucho's stock of trade. Aged ones now populate living rooms of haciendas in Argentina and Uruguay. Designed to function on uneven footing, their flexibility surprises.



Purser's Chair, IVORY & HONEY
MF082 M. 55 x 61 x 78.5cm, 21.75 x 24 x 31"

I'LL WRITE YOU LATER

Striking, yet unassuming, our Purser's Chairs match perfectly to our collection of desks. The classic design goes back to utilitarian furniture from the Belle Epoque. Handmade in hardwood, this chair will survive the ages when treated with respect.



Purser's Chair, BLACK & HONEY
MF081 M. 55 x 61 x 78.5cm, 21.75 x 24 x 31"



Purser's Chair, GUNMETAL GREY
MF081G M. 55 x 61 x 78.5cm, 21.75 x 24 x 31"



Pommel Bench, SMALL
MF141 M. 81 x 36 x 49.5cm, 32 x 14.25 x 19.5"



Pommel Bench, LARGE
MF142 M. 110 x 36 x 49.5cm, 43.25 x 14.25 x 19.5"

*A fun version of the classic gymnast's pommel horse, without the pommels...
Traditionally used by mounted warriors to train for jumping horseback! Even
Alexander the Great reputedly owned one.*



Cartagena Chair
MF139 M. 55 x 56 x 89cm, 21.75 x 22 x 35"



Campaign Folding Chair
MF126 M. 55 x 55.5 x 85.5cm, 21.75 x 22 x 33.75"





Tripod-on-the-go for Officer's and Gentlemen. Cowhide strap holds legs together while doubling as shoulder strap. Canvas seat with leather rims. Campaign carry-ons are as practical some 150 years ago as today. Take it to the races, an outdoor concert, quail hunt!

Tripod Stool

MF152 M. 36 x 33 x 55cm, 14.25 x 13 x 21.75"



Fireside Stool

MF115 M. 52 x 40 x 60.5cm, 20.5 x 15.75 x 23.75"



Bar Stool de Luxe, HONEY

MF044A M. 37.5 x 37.5 x 101.5cm, 14.75 x 14.75 x 40"

The design of our tall brasserie accessory goes back to the late 19th C. when bentwood furniture was developed in Vienna and exported across Europe and the rest of the world. Timeless in style and sturdy in construction, many have survived ages. Ours will follow the same tradition, when handled with love and care.



Bar Stool 'Grand Hotel', HONEY

MF043A M. 37.5 x 37.5 x 73cm, 14.75 x 14.75 x 28.75"



Speakeasy Seat

MF138 M. 35.5 x 35.5 x 82cm, 14 x 14 x 32.25" 82cm, 32.25" high, 71cm, 28" low



LIGHTING

COLLECTION

From enabling safe passage out at sea to illuminating Hollywood's brightest stars, industrial lamps of the past have an impressive presence which reflects the scenarios they were created for.

During the first half of the twentieth century, sailors depended on lamps to guide the way, declare presence, enable communication and facilitate on board activity. These existed in many distinctive forms, the designs of which have become desirable to a whole new audience on dry land. Authentic Models has recreated a number of these, together with lighting used for movie shoots, theatre stages and even surgical theatres and mounted them on attractive stands with functional modern day fittings. The result is beautifully characterful accent lighting without the price tags that come with salvaged originals.



A genuine "pièce de résistance" from the Authentic Models collection, this carefully detailed aluminum and brass signal lamp is an exact replica of an item salvaged from the British Royal Navy's battle cruiser HMS Furious.



Admiralty Spotlight
SL028 M. 60 x 160cm, 23.5 x 63"
Approved, max 40-watt



Coast Guard Patrol Spotlight
SL029 M. 65 x 180.5cm, 25.75 x 71.25"
Approved, max 60-watt

As always searching for the lucky find, the original of this 1930s Navy spotlight was unearthed in an antique store in Greenwich, England. In a way the light is a wonderful combination of old technology, romantic seafaring and practical lighting. Perched on its imposing rosewood tripod the light dominates, adding character to a room, an important element in today's design philosophy. Our replica is exclusive to AM, hand-crafted of brass and aluminum. This is signature AM for those who value master craftsmanship and technical skills.

This 1930s Half Mile Ray lamp is mounted on a mahogany tripod which provides it an overall cool look. Contemporary and at the same time historically correct. A clever piece of 1930s technology with its adjustable angle. Originally constructed to last a lifetime.



Half Mile Ray Searchlight
SL040 M. 60 x 164cm, 23.5 x 64.5"
Approved, max 40-watt



Campaign Tripod Lamp
SL019 (Cream Shade)

Tripods were left by a British surveying expedition in the twenties, mapping the deserts and hills of Yemen. We were impressed by the fact that the metal and wood, combined with saddler's leather straps, still looked fresh and new. Obviously a combination of quality and form follows function.

M. 80 x 128cm, 31.5 x 50.25"
Approved, max 60-watt



Campaign Tripod Lamp, BLACK
SL019C (Black Round Shade)



Campaign Tripod Lamp, BLACK
SL019B (Black Shade)

Our spotlight dates back to the 1930s and was likely used on a French Navy battleship. By moving slatted louvers the signalman sent short and longer spaced rays of light that could be read by trained sailors in the distance. Morse code uses long and short elements and combinations to convey a message. The elements making up the code were formed by sounds, marks and pulses of varying length. Created in the 1840s Morse code was in use for more than a century and a half. The famous S.O.S. sent by ships in distress (as on the Titanic) was sent by Morse code.



Marconi Spotlight

SL039 M. 100 x 195cm, 39.5 x 76.75"
Approved, max 60-watt



Marconi Spotlight II

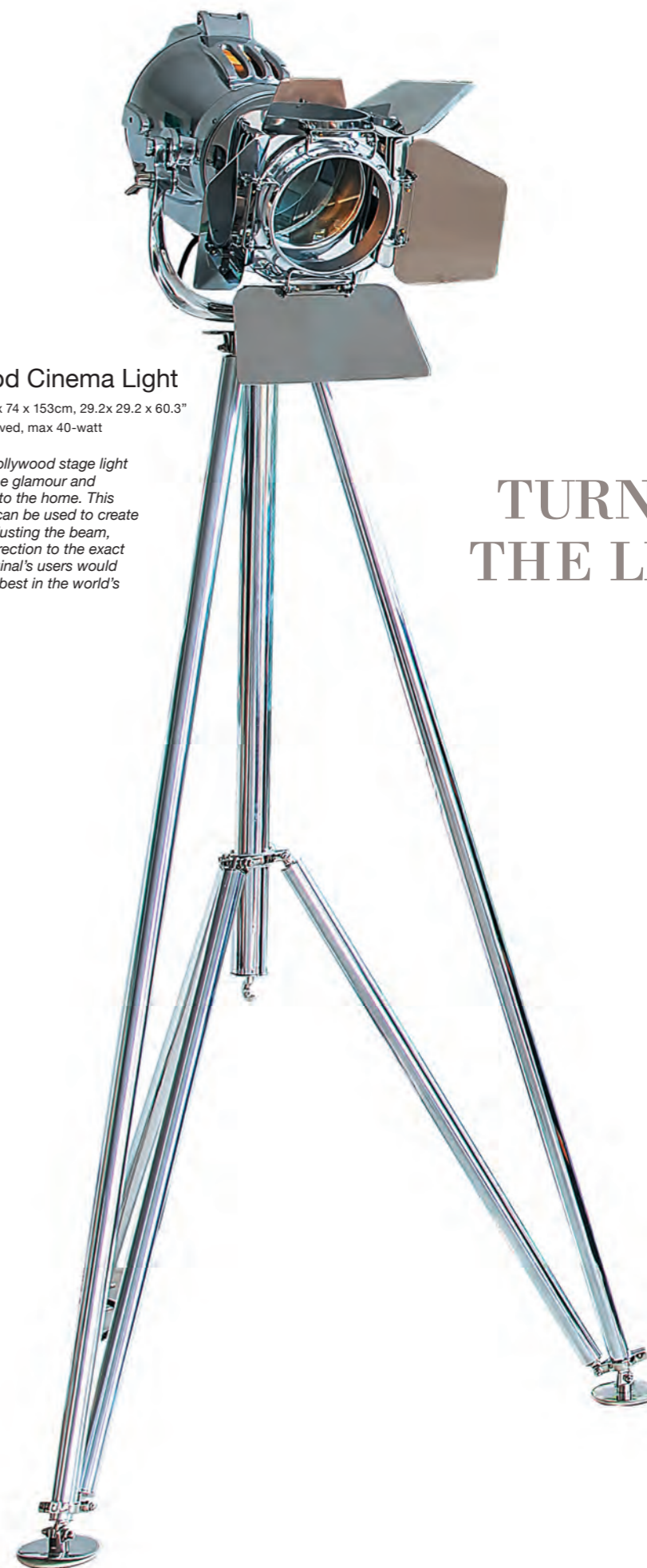
SL048 M. 125.5 x 224.5cm, 49.5 x 88.5"
Approved, max 60-watt



Hollywood Cinema Light

SL073 M.74 x 74 x 153cm, 29.2x 29.2 x 60.3"
Approved, max 40-watt

This detailed replica of a Hollywood stage light from the 1950s brings all the glamour and romance of that era right into the home. This attractive statement piece can be used to create an inviting ambience by adjusting the beam, brightness, strength and direction to the exact preference. Just as the original's users would have done to bring out the best in the world's most famous face.



**TURN ON
THE LIGHT**

Before the advent of reliable radar, naval ships depended on searchlights to survey objects in their surroundings. Those used on the US Portland, one of the most decorated ships in the American fleet and one of the few that fought through the entirety of WWII without missing a major battle, must have been particularly effective. To honour this success, we have accurately replicated the design used on this vessel, which was affectionately nicknamed "Sweet Pea" by those who sailed on her.



"Sweet Pea" Spotlight
SL075 M. 60 x 164cm, 23.5 x 64.5"
Approved, max 40-watt



Searchlight 1940, NICKEL AND BLACK
SL030 M. 67 x 200cm, 26.5 x 78.5"
Approved, max 40-watt

This searchlight comes right from the bridge of a 1940s Navy destroyer. Just engineered, not designed. Form follows function. Translated into sophisticated home décor.

Piercing the dark. Fronting a mile-long curved and polished hood. Nestled between sculpted wheel fenders while framing a huge chrome radiator. Bronze Art Deco accents.... Check out its details and the tall ebonized tripod with a travel compass dating back to the Mille-Miglia of the 1920s!



Phaeton Limo Light
SL035 M. 74 x 180cm, 29.25 x 71"
Approved, max 40-watt



1940s Surgeon Lamp

SL042 M. 170 x x 78 x 215cm,
67 x 30.75 x 84.75"
Approved, max 40-watt

For brave soldiers injured in combat, the steadily focused lamps used in operating theatres were integral to saving their lives. Recognising the beauty in both the purpose and the construction of these lamps, we have recreated them to shine a spotlight on modern day interiors. Applying their dedicated precision to making today's world look more attractive.





Stevedore's Lamp

SL057 M. 12 x 12 x 40cm, 4.73" x 4.73" x 30.73"
Approved, max 25-watt

Tramp steamers are now a memory of a colonial past when small freighters sailed from port to port delivering and picking up freight. Fast turnarounds were routine, loading was done using local dockworkers who were also called stevedores. Holds were filled with canvas wrapped rice bales, barrels of whale oil, crated porcelain. After loading the stevedore supervised stowing, counting and signed the manifest for local customs. When in port his job was day and night, and he knew every nook and cranny of the vessel, while carrying his 'hold' lamp because heavy wooden hatch covers turned day into night belowdecks. Our wood, brass and leather authentic replica of the stevedore steamer is such a hold lamp, and stands upright as well. The electric cable plugs into standard sockets. An interesting and practical symbol of a bygone era.



The name Lumina is of Latin origin and literally means brilliant light. This lamp can't have a better name as it brightly lightens its environment. In solid aluminum with sanded glass.



Lumina Light

SL071 M. 30 x 40 x 30cm, 11.8x 15.8 x 11.8"
Approved, max 40-watt



Funnel Wall Lamp

SL074 17 x 13 x 29cm, 7 x 7.5 x 12"
Approved, max 25-watt



Cargo Inspection Lamp

SL058 Ø 35 x 35cm, 13.8 x 13.8"
Approved, max 50-watt



Main Hold Lamp

SL037 M. 50 x 51cm, 19.75 x 20"
Approved, max 60-watt

It's incredible that so few Admiralty lamps from the early 1900s have survived. But it may be many of them were refashioned into WWII gear, when people were asked to turn in brass and aluminum heirlooms. Plows to bullets... Using old and off-forgotten techniques, we have been able to bring back the interesting shapes of early hold and go down lamps. Impressively large and practical, they were built to last. Complete with stainless steel hanging wires and ceiling bracket.



Steamer Deck Lamp

SL062 Ø 34 x 31cm, 13.5 x 12.25"
Approved, max 25-watt

The originals lighted the passages and corridors of early 20th C. steamships and tramp steamers. Ours can light up any space you like.



Hangar Lamp

SL072 Ø 33,5 x 58cm, 13.9 x 24.1"
Approved, max 40-watt

Those with a passion for planes will be sure to love this accurate replica of a classic aluminium hangar lamp. A subtle, yet characterful way of enhancing an aviation-themed environment.



Charleston Lamp

SL067 Ø 33 x 15cm, 13 x 6"
Approved, max 60-watt

Nicely molded classic French country style. All bronze finished brass, and antique copper. Complete with ceiling bracket.



Venetian Lantern

SL047 M. 18 x 18 x 34.5cm, 7.1 x 7.1 x 13.6"

This solid brass candle lantern is a recreation of a 17th century Renaissance style piece, incorporating the exotic oriental designs which have inspired Italian artisans since the 11th C. While originals have become rare and costly, our copy is very affordable.



Venetian Lantern

SL047A M. 18 x 18 x 34.5cm, 7.1 x 7.1 x 13.6"



Author's Desk Lamp

SL065 M. 18 x 57.5 x 41cm, 7 x 22.75 x 16.25"
Approved, max 25-watt

The many subtle details of this classic 1920s French lamp easily impress. Every facet is well executed and perfect. An intriguing, solid counterweight balances the compact, bell-like shade.



Writer's Desk Lamp

SL049 M. 21 x 21 x 42cm, 8.3" x 8.3" x 16.5"
Approved, max 25-watt

Study the details of this classic French 1920's writers lamp. In silver aluminum with a small foldable stand. Practical and elegant at the same time. Usually not the easiest combination but somehow they managed in the past!



Miner's Lamp

SL109 M. 31 x 13 x 13cm, 12.2 x 5.18 x 5.18"

Surrounded by darkness, miners had to rely on their lamps as it could be their life saver. This exact replica is made to the same highest standards as before.



Anchor Lamp, Brass & Copper

SL043 M. 19 x 30cm, 7.5 x 12"

Study the details of this classic anchor lamp. Cast handle. Cast slots. Heavy copper sheet. Molded name plaques. Hand-blown glass. Kerosene burner...



Steamer Funnel Lamp

SL069 M. 23.3 x 49 x 23.3cm, 9.25 x 19.25 x 9.25"
Approved, max 25-watt

Cassandre, the famous French graphic designer, used stark graphic funnel images for one of his most famous creations; the Statendam poster. Inspired by this early 1930s image, our hand crafted, polished steel lamp is a mix between its original art deco shape and a stylized nun's habit.



Concorde Desk Lamp

SL064 M. 19 x 70 x 67cm, 7.5 x 27.5 x 26.5"
Approved, max 25-watt

A lamp for town and country. Universal appeal, in a style going back to the 1930s. Solidly constructed in brass, this lamp is built to last.



AVIATION COLLECTION

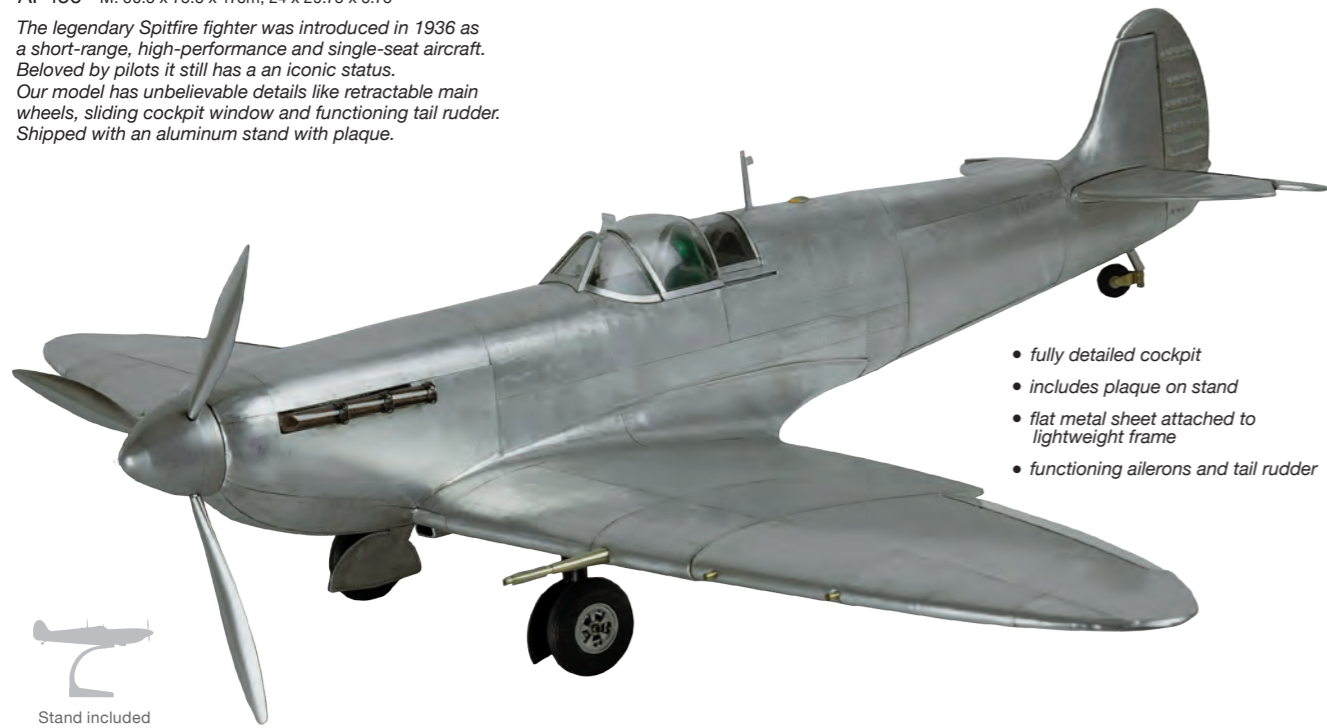
When the first manned balloon flight took place in 1783, who dared to dream of the airships and aeroplanes which would be invented in centuries to come? Of course, conquering the skies has meant many different things to different people over the ages. From opening up glamorous worlds of adventure and exploration to playing a pivotal role in warfare. A broad range of achievements which deserve to be celebrated through beautifully crafted decoration pieces.



Spitfire

AP456 M. 60.5 x 75.5 x 17cm, 24 x 29.75 x 6.75"

The legendary Spitfire fighter was introduced in 1936 as a short-range, high-performance and single-seat aircraft. Beloved by pilots it still has an iconic status. Our model has unbelievable details like retractable main wheels, sliding cockpit window and functioning tail rudder. Shipped with an aluminum stand with plaque.



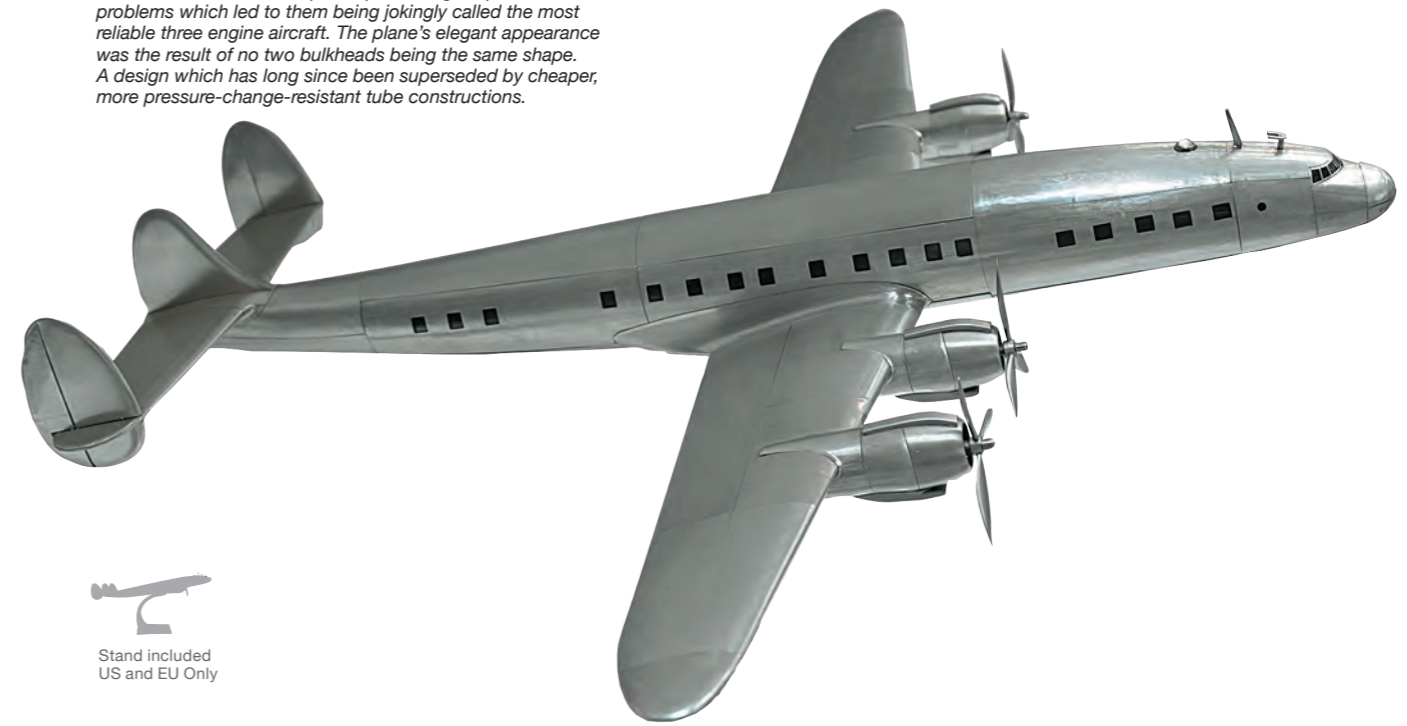
- fully detailed cockpit
- includes plaque on stand
- flat metal sheet attached to lightweight frame
- functioning ailerons and tail rudder

Stand included
US and EU Only

Constellation

AP458 M. 69 x 75 x 13cm, 27.2 x 29.6 x 5.1"

Sleek and powerful. Constellations set a number of speed and distance records, despite experiencing frequent motor problems which led to them being jokingly called the most reliable three engine aircraft. The plane's elegant appearance was the result of no two bulkheads being the same shape. A design which has long since been superseded by cheaper, more pressure-change-resistant tube constructions.

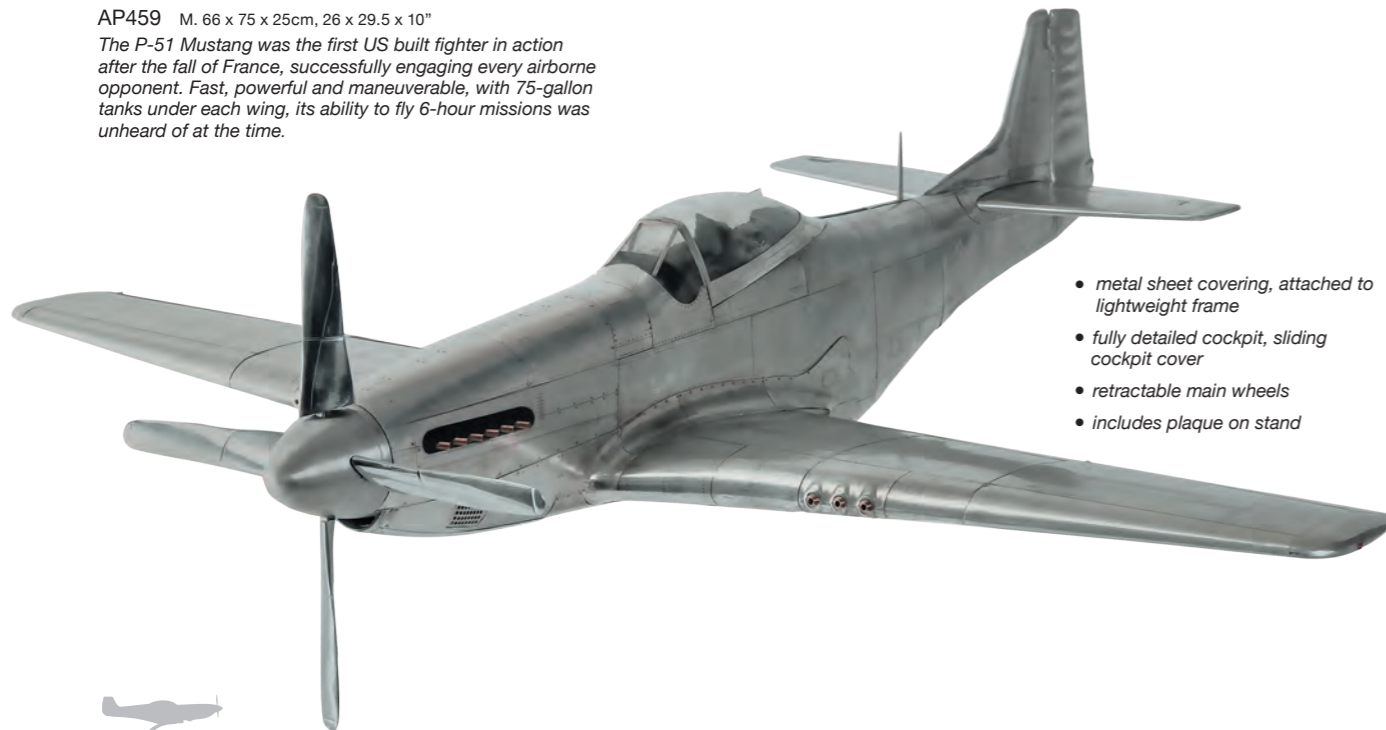


Stand included
US and EU Only

WWII Mustang

AP459 M. 66 x 75 x 25cm, 26 x 29.5 x 10"

The P-51 Mustang was the first US built fighter in action after the fall of France, successfully engaging every airborne opponent. Fast, powerful and maneuverable, with 75-gallon tanks under each wing, its ability to fly 6-hour missions was unheard of at the time.



- metal sheet covering, attached to lightweight frame
- fully detailed cockpit, sliding cockpit cover
- retractable main wheels
- includes plaque on stand

Stand included
US and EU Only

Dakota DC3

AP455 M. 64.5 x 97 x 17cm, 25.5 x 38.25 x 6.75"

The DC3 has earned the epithet "Workhorse of the Skies". Thousands were produced from the end of WWII into the 1950s by the Douglas Aircraft works. Military, civilian, government, private, you name it. Utterly reliable. Even now it's possible to find them flying from remote airports, landing on the tightest strips. Legendary and nostalgic. Aluminum, riveted propellers, noisy, but also safe and familiar.



Stand included
US and EU Only

Ford Trimotor

AP452 M. 67 x 102 x 20cm, 26.25 x 39.75 x 7.75"

Between 1926 and 1933 only 199 Trimotors were built in Ford's own factory. Corrugated metal on great thick monoplane wings was a German development, used in Junker JU-52 planes that were flying the Berlin-Rome-London route. Trimotors were flown by airlines, oil companies and wealthy individuals. The Ford Trimotor and Junkers JU-52 were pioneering airplanes that led to generations of Douglas and Boeing fleets of aircraft, soon to criss-cross the world.

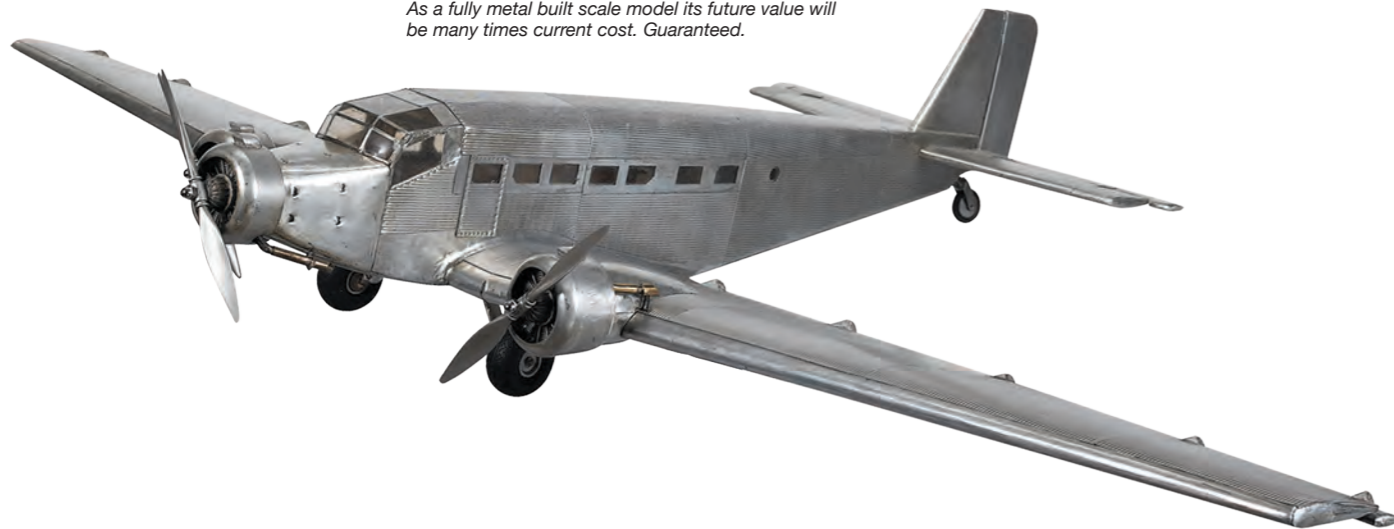


Stand included
US and EU Only

Junkers JU-52 'Iron Annie'

AP454 M. 67 x 98 x 26cm, 26.5 x 38.5 x 10.25"

An iconic European counterpart of the Ford Trimotor. Iron Annie versus Tin Goose. Characteristic steel paneling. Popular for its comfort and dependability. Built in Dessau in the 30s, it offered airlines reliable service and great cargo capacity. As a fully metal built scale model its future value will be many times current cost. Guaranteed.



Stand included
US and EU Only

Spirit of St. Louis

AP250 M. 31 x 49.5 x 9cm, 12.25 x 19.5 x 3.5"

Detailed model of the one that Charles Lindberg soloed across the Atlantic. Take a peek through windows into a detailed cockpit.



Dixie Clipper

AP451 M. 57.5 x 80 x 14cm, 22.75 x 31.5 x 5.5"

Legendary leviathan, like an albatross. It seemed nearly impossible that it could even take off. Skimming waves at increasing speed, revving up its four engines. Inside staterooms, a dining area and bunk beds. Boarding from a dock or using a ship's tender, it was the 1930s epitome of class and luxury. That was leisure travel and luxury at the same time, never to come back in that measure.



Stand included
US and EU Only

READY FOR TAKE-OFF



Sopwith Camel, WHITE

AP243W M. 26 x 38 x 12.5cm,
10.25 x 15 x 5"

Incredibly detailed desktop Sopwith Camel in trendy white. Spoke wire wheels, rotary engine, laminated propeller.

- laminated wood propeller
- spoke wheels with rubber tires



Sopwith Camel, TRANSPARENT

AP502T M. 102 x 150 x 45.5cm,
39.75 x 58.5 x 17.75"

Sopwith Camel, TRANSPARENT 2.5M

AP602T M. 250cm, 98.5", Call for availability.

The Sopwith was the mainstay fighter-plane of the British and USA air forces in the early 1900s. Brightly painted in various national colors, it ruled the skies for a number of years.



Sopwith Camel, SMALL

AP243 M. 26 x 38 x 12.5cm, 10.25 x 15 x 5"

Sopwith Camel, MEDIUM

AP402 M. 50 x 75 x 24cm, 19.75 x 29.5 x 9.5"

Sopwith Camel, LARGE

AP502 M. 102 x 150 x 45.5cm,
39.75 x 58.5 x 17.75"

Sopwith Camel, EXTRA LARGE

AP602 M. 250cm, 98.5", Call for availability.



Spad XIII

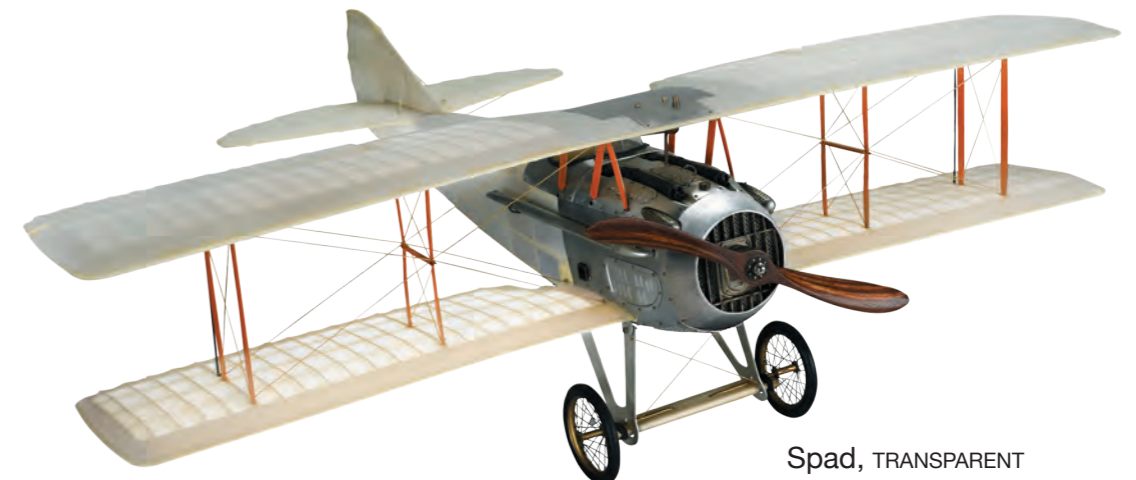
AP413 M. 60 x 76 x 23cm, 23.5 x 30 x 9"

This allied WWI Spad, nicknamed Vieux Charles, is a true miniature replica of Guynemer's plane, still revered in France today.



Spad, FRENCH

AP413F M. 60 x 76 x 23cm, 23.5 x 30 x 9"



Spad, TRANSPARENT

AP413T M. 60 x 76 x 23cm, 23.5 x 30 x 9"

- a lightweight frame is assembled and silk fabric is stretched across, similar to the original construction in the early 1900s



Zeppelin, 1937

AP170 M. 112.5 x 23 x 22cm, 44.25 x 9 x 8.75"

A nice scaled model of an oversized craft. Fabric stretched over lightweight frame. Hand built, 600 glued joints. Dramatic and historical from the Golden age of travel.



Fokker Triplane

AP203 M. 38.5 x 47 x 19cm, 15.25 x 18.5 x 7.5"

Desktop model of the legendary Red Baron's own plane. An icon of early flight.



Flying Circus Jenny, MEDIUM

AP400 M. 51 x 80 x 18cm, 20 x 31.5 x 7"

Jennies conquered the nation after the close of WWI. Stunts, sightseeing by the half hour, postal and even circus flights taking off.

- admire cockpit details, leather covered seats, instruments
- metal struts and engine covers



Jenny JN-7H Classic Barnstormer, MEDIUM

AP401 M. 51 x 80 x 18cm, 20 x 31.5 x 7"

In brilliant yellow and blue US army colors, now soaring the living room skies. Historic flight in miniature.

186cm PROPELLERS

M. 186 x 15 x 9cm,
73.25 x 6 x 3.5"

Nothing symbolises aviation history more simply and evocatively than propellers. We've created faithful replicas of classic models and decorated them to become attractive wall décor. Respecting and celebrating history while making it relevant to modern day interiors.



120cm PROPELLERS

M. 120 x 10.5 x 6 cm, 47.25 x 4 x 2.25"



WWI Vintage Star, SMALL
AP177



Sopwith Red Stripes, SMALL
AP176



Sopwith Propeller, SILVER
AP149S



Sopwith WWII, SMALL
AP178



WWI Vintage Star, LARGE
AP180



Sopwith Red Stripes, LARGE
AP179



Vintage Black Tips, LARGE
AP182



Sopwith WWII, LARGE
AP181



Four Blade Wooden Propeller

AP139 M. 120 x 120 x 6cm, 47.3" x 47.3" x 2.4"

As WWII progressed, every opportunity to gain advantage had to be taken. Fighter plane engine capacity was increasing. But that was worthless unless propellers were also modified to turn that extra power into more speed. While the classic 2-blade propeller was known to be the most efficient design, lengthening the blades to utilise the increased power would result in them touching the ground during take-off and landing. One solution was the introduction of the four-blade propeller.

Small Propeller, 4-BLADE

AP142 M. 70cm x 70cm x 5cm,
27.58 x 27.58 x 1.97"

You don't need a room as big as an aircraft hangar to appreciate this charming wall decoration. Just the thing to give smaller spaces a feel of the open skies.



Barnstormer Rack

AP148
M. 15 x 14 x 9cm, 21.75 x 5.5 x 3.5"

Barnstormer #1 AP145
Barnstormer #2 AP146

You can't see the mechanic from your open cockpit. You yell... "Contact" and the propeller jumps to life, the plane starts to shudder. The mechanic pulls away the wheel blocks and escapes. The noise is incredible, a nine-cylinder Hispano-Suiza... Spewing clouds of vaporized castor-oil. Complete cacophony. The propeller is by now an invisible whirr. Out of the way, this is hands-on flight at its finest. Ready for take-off?

Barnstormer #3 AP147
M. 120 x 13.5 x 6.5cm,
47.25 x 5.5 x 2.75"

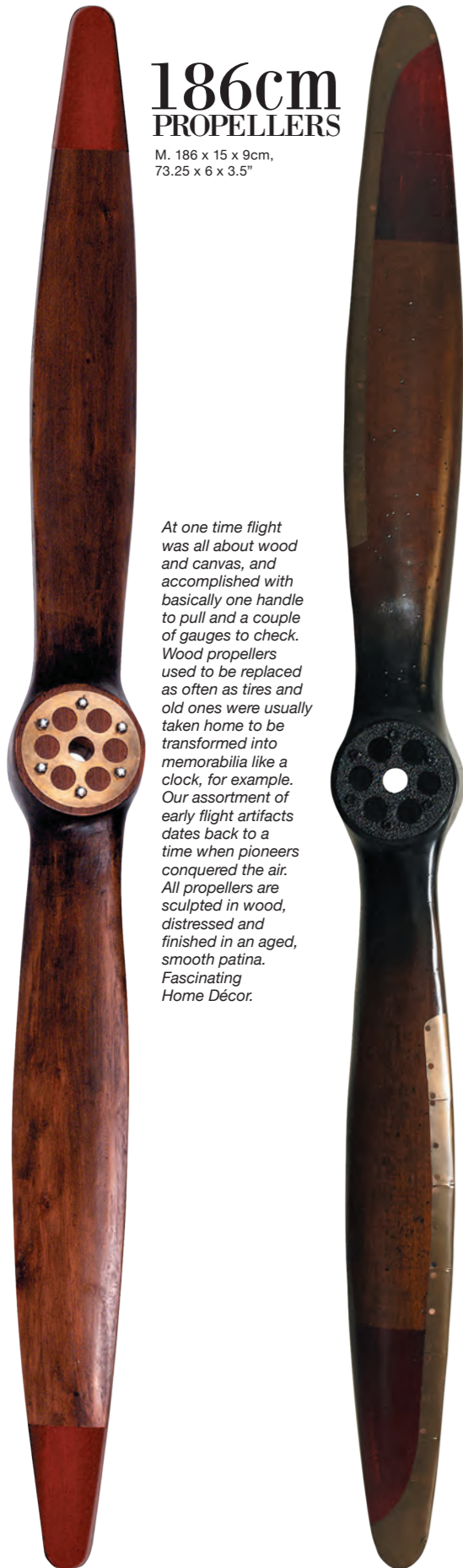
Baby Prop, GOLD/RED AP143

Baby Prop, IVORY/BLACK AP144
M. 70 x 8 x 4.5 cm, 27.5 x 3.25 x 1.75"



186cm PROPELLERS

M. 186 x 15 x 9cm,
73.25 x 6 x 3.5"



At one time flight was all about wood and canvas, and accomplished with basically one handle to pull and a couple of gauges to check. Wood propellers used to be replaced as often as tires and old ones were usually taken home to be transformed into memorabilia like a clock, for example. Our assortment of early flight artifacts dates back to a time when pioneers conquered the air. All propellers are sculpted in wood, distressed and finished in an aged, smooth patina. Fascinating Home Décor.

• all propellers are handmade in solid wood

WWI Wood Propeller
AP155

Vintage Flight
AP158

WWI Vintage Propeller, LARGE
AP155F

Sopwith Propeller
AP159

120cm PROPELLERS

M. 120 x 10.5 x 6 cm, 47.25 x 4 x 2.25"



WWI Wood Propeller, SMALL
AP150F



WWI Vintage Propeller, SMALL
AP150



WWI Laminated Propeller with Clock
AP154



Sopwith Propeller, SMALL
AP149

Propeller Desk Clock

AP111 M. 30.5 x 9.5 x 5.5cm, 12 x 4 x 2"



Art Deco Flight Clock

AP104 M. 35.5 x 7 x 10.5cm, 14 x 2.75 x 4.25"

An exact reproduction of a 1930s Art Deco flight clock. Hand cast airplane aluminum, polished. Nostalgic and chic.



Gloster Meteor 1945

AP097 M. 15.5 x 16.5 x 14.5cm, 6.25 x 6.5 x 5.75"

The Gloster Meteor was the first British jet fighter. Not sophisticated but proven to be a successful combat fighter.



1930s DC-3

AP110 M. 50 x 51 x 30cm, 19.75 x 20.25 x 11.75"

The DC3 has earned the nickname "Workhorse of the Skies". Legendary, nostalgic and utterly reliable.

Desktop DC-3

AP105 M. 27 x 36 x 17.5cm, 10.75 x 14.25 x 7"

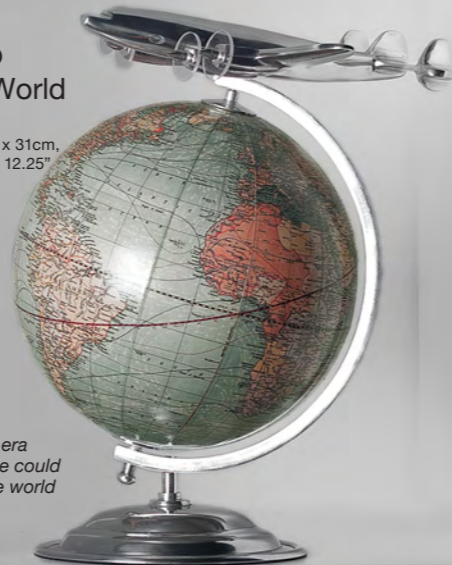
Nostalgic and perfect replica of an early travel agent advertising sign.



On Top of the World

AP108 M. 22 x 26.5 x 31cm, 8.75 x 10.5 x 12.25"

From an era when one could travel the world in style!



Autour Du Monde

AP103A M. 21 x 26.5 x 18cm, 8.25 x 10.5 x 7"

This 1950s Constellation is an authentic copy of a travel agent airline advertising object.



Spitfire Travel Model

AP099 M. 19 x 20 x 14.5cm, 7.5 x 8 x 5.75"

This iconic aluminum Spitfire is an exact copy of a WWII original trench art model. The original was probably crafted by a plane mechanic, stationed on a isolated British airfield.



Tornado Jetfighter

AP096 M. 28 x 17.5 x 21cm, 11 x 7 x 8.25"

The Tornado model is a detailed replica of original factory supplied models gracing the desks of top military brass offices.



Includes plaque on stand
Gift packaged

Concorde

AP112 M. 46 x 17.5 x 21.25cm, 18.25 x 7 x 8.5"

London-New York in 3 hours: the only supersonic passenger aircraft ever made. Recreated from original models displayed at the top travel agents.



Corsair Paperweight

AP102 M. 17.5 x 17 x 15cm, 6.9 x 6.7 x 5.91"

The Corsair went on to become the most capable carrier-based fighter-bomber of World War II.



WWII Mustang Desk Model

AP098 M. 15 x 16 x 16cm, 6 x 6.5 x 6.5"

This iconic aluminum Mustang is an exact copy of WWII original trench art models.





Flight Mobile, 1920

AP120 M. 66 x 58.5 x 30.5cm, 26 x 23 x 12"

Stainless steel wires and nylon line keep planes in constant graceful motion.



Around the World Mobile

AP124 M. 34.5 x 66 x 40cm, 613.5 x 25 x 15.75"

Three wooden planes gracefully glide around our 1920s globe.





Flying Skies Mobile, RAINBOW PASTEL

AP132 M. 85 x 8.5 x 66.5cm, 33.5 x 3.5 x 26.25"

These balloons are as fascinating today as they were a century ago!



Flying Skies Mobile, PRIMARY

AP128 M. 85 x 8.5 x 66.5cm, 33.5 x 3.5 x 26.25"



Flying Skies Mobile, BLACK/WHITE

AP133 M. 85 x 8.5 x 66.5cm, 33.5 x 3.5 x 26.25"



Flying Skies Mobile, PASTEL

AP129 M. 85 x 8.5 x 66.5cm, 33.5 x 3.5 x 26.25"



Rainbow Pastel

Mint

Rainbow

True Red

Blue



True Green

True Yellow

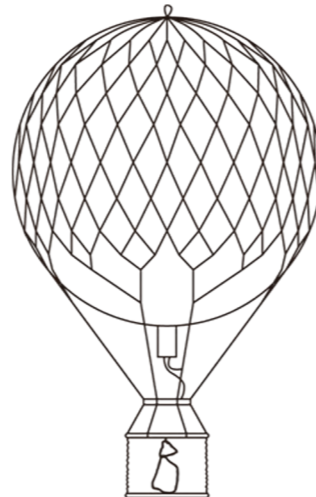
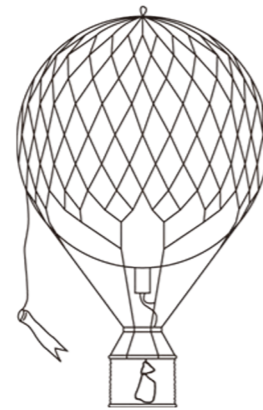
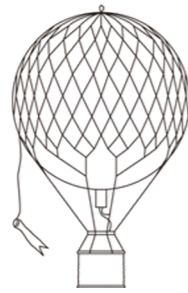
White/Ivory

Lavender

Black

Pink

It's not like you'll call ahead for tea and scones. Arrival time, even arrival place is unpredictable at best. But the feel... viewing the earth, leaning on the basket's rim, like a silent movie, floating the sky. A diminutive feeling, hanging from an enormous fabric balloon filled with helium. A Zen-like mood soon kicks in; watch the rolling hills, view snow in the mountains far away... your shadow skimming the hilltops, life down there stops to watch you glide.



Ø 8.5cm Balloons

Ø 18cm Balloons

Ø 32cm Balloons

Ø 42cm Balloons

Floating the Skies

- AP160D Blue
- AP160E Rainbow
- AP160F Rainbow Pastel
- AP160G True Green
- AP160K Black
- AP160L Lavender
- AP160M Mint
- AP160P Pink
- AP160R True Red
- AP160W White/Ivory
- AP160Y True Yellow

Ø 8.5 x 13cm, 3.25 x 5"

Travels Light

- AP161D Blue
- AP161E Rainbow
- AP161F Rainbow Pastel
- AP161G True Green
- AP161K Black
- AP161L Lavender
- AP161M Mint
- AP161P Pink
- AP161R True Red
- AP161W White/Ivory
- AP161Y True Yellow

Ø 18 x 30cm, 7 x 11.75"

Royal Aero

- AP163D Blue
- AP163E Rainbow
- AP163F Rainbow Pastel
- AP163G True Green
- AP163K Black
- AP163L Lavender
- AP163M Mint
- AP163P Pink
- AP163R True Red
- AP163W White/Ivory
- AP163Y True Yellow

Ø 32 x 56cm, 12.5 x 22"

Jules Verne Balloon

- AP168E Rainbow
- AP168F Rainbow Pastel
- AP168G True Green
- AP168M Mint
- AP168R True Red
- AP168W White/Ivory

Ø 42 x 70cm, 16.5 x 27.5"





NAUTICAL

COLLECTION

Endeavour, adventure and sheer joy on the water has meant many different things to different people through the ages. The vast array of different vessels which have sailed the seas and mastered inland waterways hold meaningful connections to explorers, immigrants, leisure travellers and sportspeople alike. Authentic Models' accurate models of sailing ships, steamers, runabouts and decorative oars bring beauty to interior spaces while evoking emotions connected with golden eras of water transport.





Dragon Olympic Sail Racer
AS078F M. 76.5 x 18 x 99cm, 30 x 7 x 39"

Classic Olympic racer from the 1930s is still popular today. Beautiful mahogany planked hull. Built from approved racing class blueprints. Hands-on sailing history for lovers of wooden craft. This is a real scale model, a miniature of a legendary regatta racer. Cotton sails and lines with a French finished hull. Easy to assemble.



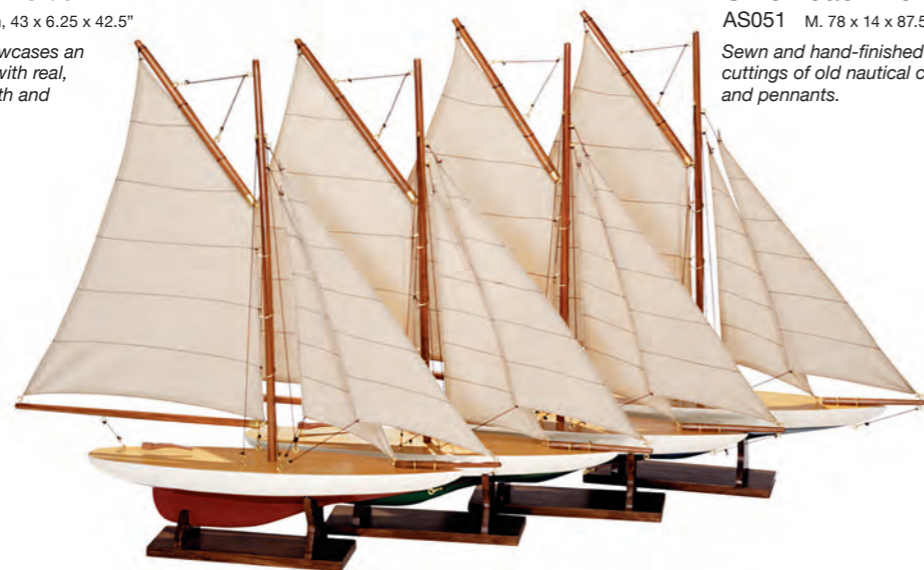
Sail Model 1901, BLUE/GREEN
AS050 M. 109 x 16 x 108cm, 43 x 6.25 x 42.5"

This classic pond yacht showcases an era when children grew up with real, hands-on objects to play with and learn from.



Union Jack Pond Yacht
AS051 M. 78 x 14 x 87.5cm, 30.75 x 5.5 x 34.5"

Sewn and hand-finished sails represent cuttings of old nautical country flags and pennants.



Mini Pond Yachts, Set of 4
AS057A M. 51 x 8 x 50cm, 20 x 3.25 x 19.75"



1930s Classic Yacht, LARGE
AS135 M. 54.5 x 12.75 x 59.75cm, 21.5 x 5 x 23.5"



1930s Classic Yacht, SMALL
AS134 M. 54.5 x 12.75 x 59.75cm, 21.5 x 5 x 23.5"

A sailor's dream, attractive and well proportioned. This classic 1930s yacht model is a beauty. Clean and crisp sails, bronze portholes and lots of nice details. Available in two sizes.

Ranger, the 1937 A-Cup contender, in original colors of red and white. Clean white sails, detailed stitching. Great Home Décor.



J-Yacht 'Ranger' 1937
AS150 M. 69 x 14 x 89cm, 27.25 x 5.5 x 35"



J-Yacht, GREY
AS153 M. 69 x 14 x 89cm, 27.25 x 5.5 x 35"



J-Yacht 'Rainbow' 1934
AS152 M. 69 x 14 x 89cm, 27.25 x 5.5 x 35"



America's Cup Columbia, LARGE
AS075F M. 173 x 23 x 166.5cm, 68 x 9 x 65.5"



America's Cup Columbia, MEDIUM
AS076F M. 114.5 x 18 x 118.5cm, 45 x 7 x 46.75"



America's Cup Columbia, SMALL
AS108F M. 94 x 13 x 90cm, 37 x 5 x 35.5"



Newport Sloop
AS168 M. 46 x 17.5 x 21.25cm, 18.25 x 7 x 8.5"



Yacht 'Ironsides', SMALL
AS167 M. 46 x 17.5 x 21.25cm, 18.25 x 7 x 8.5"

If you are looking for a model ship with tremendous appeal, look no further. Consider this: it's nautical, it's an antique toy and it's built plank-on-frame. Not too small and not too big. Most of all it's a tremendous value. All wood, walnut finished, brass antique hardware, tea stained sails, complete with stand and cast-iron original issue keel weight.

The tranquil simplicity of our America's Cup yacht models capture the spirit of classic sailing ponds. Le Lac in the Bois de Boulogne. The Serpentine in Hyde Park. The boat pond in Central Park N.Y. Classic sepia photographs of boater hatted Dads launching their sons' toy boats into dark waters, hoping for a speedy return. Beach visits with tin metal-pails to collect shells and sand. A boat model to sail the rippled ocean water between high and low tide. They leave cherished memories of both tranquil and exciting moments.





Aquarama

AS182 M. 64 x 20 x 19cm,
25.25 x 7.75 x 7.5"

Plaything of the very rich back in the 1950s. The Côte d'Azur, Cannes, Monaco, Lago di Como... A beautiful model to remind you of that elusive dream.



Thunderboat

AS184 M. 80 x 30 x 23cm,
31.5 x 11.75 x 9"

Impeccable quality is evident in the leather seats, wood stand and chrome details. Includes squared windshield, steering wheel and gauges. Hmm... you'd probably love to move the throttle and roar out to open water...



Triple Cockpit

AS183 M. 64 x 20 x 19cm,
25.25 x 7.75 x 7.5"

The throaty growl of that big engine built inside gleaming mahogany, rich leather, chrome trim. Leather padded seats displayed movie stars trying out the new bikini fashions. Husband number 3, 4, or 5 behind the wheel, decked out in spotless captain's finery. No Coast Guard was able to overtake these sleek twin-engine torpedo shaped racers. The curves, the looks, the excitement, the opulence...



Madeira Y6, Brown

AS141F M. 45 x 8.5 x 42cm, 17.75 x 3.5 x 16.5"



Madeira Y6, BLUE

AS142F M. 45 x 8.5 x 42cm, 17.75 x 3.5 x 16.5"



Madeira Y9, RED

AS140F M. 45 x 8.5 x 42cm, 17.75 x 3.5 x 16.5"



A-Cup Mobile

AS130 M. 93 x 3.5 x 32cm, 36.5 x 1.5 x 12.5"

Four colored 1930s J-Yacht miniatures racing in the air. Made of solid wood and cotton sails. Ever so graceful, even at this size the miniatures are authentic and correct in their details.



Sunset Sailors, SET OF 4

AS170 M. 28 x 7.5 x 40.5cm, 11 x 3 x 16"

The nicest part of a day on the water is returning to port. Sun low over the horizon, becoming a bit sleepy, ready to dock, take the sails down, stroll home, and enjoy a cold beer. Our wood hand built flotilla of four sailing dinghies features fresh, bright and sunny colors. Display one or a whole set, bathroom, window, bookshelf. Precious and fun.

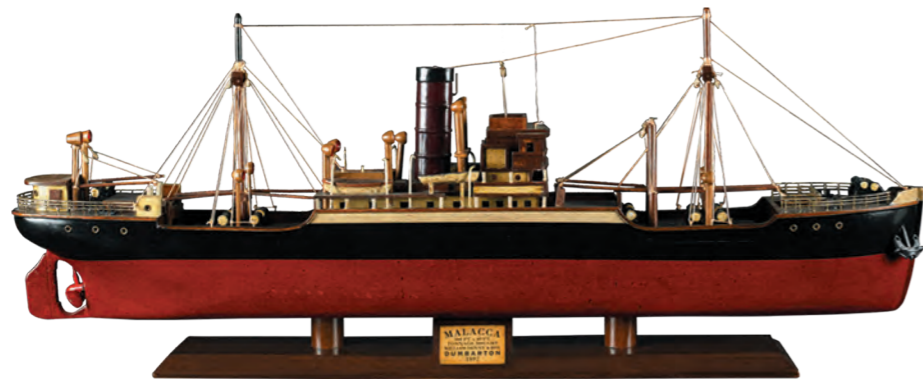


Saskatchewan Canoe

AS185 M. 100 x 15.5 x 20cm, 39.5 x 6.25 x 8"



Tramp Steamer 'Rangoon'
AS300 M. 64 x 5.5 x 31.25cm, 25.25 x 2.25 x 12.25"



Tramp Steamer 'Malacca'
AS303 M. 68 x 8 x 27cm, 26.75 x 3.25 x 10.75"

For many shipping lines, filling up cabin space was important as filling the cargo hold. Amenities ranged all the way up to first class staterooms with luxurious dining halls where elaborate cuisine was shared at table with the ship's officers. This was the mode of travel favored by writers, and anyone who sought to escape from the busyness of life and savor the solitude afforded by life at sea.



Titanic
AS083 M. 91.5 x 18 x 36cm, 36 x 7 x 14.25"

Once the largest man-made moving object on Earth, with interiors inspired by the London Ritz hotel, its own onboard newspaper and musicians with a repertoire of 352 songs, the RMS Titanic represented the pinnacle of endeavour and luxury. This attentively crafted model recreates the vessel in fascinating external detail.



To protect them against the elements, steering wheels are mostly polished or lacquered. This one has kept its natural wooden looks as its one and only purpose is to decorate your space.

Captain's Steering Wheel
WD020 M. 105 x 22 x 44cm, 19.7" x 8.7" x 44.3"



During the 19th century, shipwrights created exact scale half hull models, a construction plan for a ship's hull design and its particular curvature "sheer". These were mounted and displayed in admiralty and shipping offices, and now sell at auction as decorative nautical art.

Clipper Lightning 1854
AS190 M. 94 x 9 cm x 25cm, 37 x 3.5 x 10"



Clipper Argonaut 1876
AS191 M. 94 x 9 cm x 25cm, 37 x 3.5 x 10"



Clipper Thermopylae 1868
AS192 M. 94 x 9 cm x 25cm, 37 x 3.5 x 10"



Lifeboat Oar
FE103 M. 184.25 x 14 x 4cm,
72.5 x 5.5 x 1.5"



Oxford Varsity
FE104 M. 235 x 16.5 x 5cm,
92.5 x 6.5 x 2"

Tender Oar, RED
FE105 M. 182 x 13.5 x 8cm,
71.75 x 5.25 x 3.25"



Tender Oar, IVORY
FE106 M. 182 x 13.5 x 8cm,
71.75 x 5.25 x 3.25"



Royal Barge Rack
FE128 M. 90 x 9 x 7 cm, 35.5 x 3.5 x 2.75"
Royal Barge rack holds 5 Oars. Great for store display.



Royal Barge Oars

Royal Barge Oar #1 FE123 M. 14 x 4.5 x 144cm, 5.5 x 1.75 x 56.75"
Royal Barge Oar #2 FE124 M. 14 x 4.5 x 144cm, 5.5 x 1.75 x 56.75"
Royal Barge Oar #3 FE125 M. 14 x 4.5 x 144cm, 5.5 x 1.75 x 56.75"
Royal Barge Oar #4 FE126 M. 15 x 4.2 x 117.5cm, 6 x 1.75 x 46.25"
Royal Barge Oar #5 FE127 M. 15 x 4.2 x 117.5cm, 6 x 1.75 x 46.25"



Red Oar
FE119 M. 120 x 9 x 15cm, 47.25 x 3.5 x 6"



Black Oar
FE120 M. 120 x 9 x 15cm, 47.25 x 3.5 x 6"

We've used signal flag designs on oar paddles to make attractive, sturdy coat racks. Four wood knobs for hanging coats and packs. Perfect for lil' captains to hang their cap.



Oxford Varsity Coat Stand
FE117 M. 68.5 x 68.5 x 187.5cm,
27 x 27 x 73.75"

Three oars make up a sturdy and attractive coat stand. Brass hardware, turned finial, rattan key & change basket. Practical, attractive, colorful. Assembly required.

Oars make a large statement home décor pieces, which work in many environments. Place them in your beach house on your porch. Frame a doorway or place above the kitchen worktop to hang pots and pans.



GLOBES

COLLECTION

As the great explorers gradually discovered and charted more and more of our planet, and countries laid claim to various territories, there was a continuing need to re-document it all. With this, the incredible art of globe-making thrived. Such was the beauty and historical significance of outdated versions, these have become desirable decorative objects.

A world leader in antique globe reproduction, Authentic Models replicates the complex gravure printing technique which was developed to display the fine details these reference works required. Our collection represents five centuries of globe development by some of the greatest names in cartography, tastefully mounted on sympathetically designed stands to bring old world charm into even the most modern of settings.



Hand applied gores from the famous Dutch cartographer, Gerardus Mercator, engraved charts from 1541. Made in cooperation with the Royal Library in Bruxelles.



Griffin Globe
GL053 Ø 18.5 x 39.5cm,
7.25 x 15.5"



Vaugondy Globe 1745, SMALL
GL027 Ø 8.5 x 9cm, 3.25 x 3.5"
Gift Packaged



The Age of Exploration
GL031 Ø 8.5 x 10.5cm, 3.25 x 4.25"
Gift Packaged



The Earth & The Heavens 1551
GL032 Ø 8.5 x 10.5cm, 3.25 x 4.25"
Gift Packaged



1921 USA Globe Weber Costello
GL026 Ø 34.5 x 61cm, 13.5 x 24"

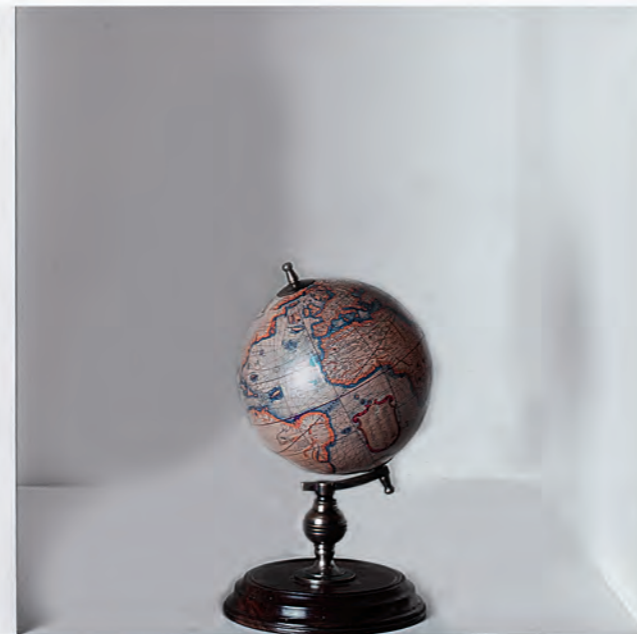
Trianon Globe
GL045 Ø 14 x 26.25cm, 5.5 x 10.25"



Globe Bookends
GL009F Ø 8.5 x 10.5cm, 3.25 x 4.25"



Navigator's Terrestrial Globe, FRENCH FINISH
GL023F Ø 26.5 x 29.75cm, 10.25 x 11.75"



Desktop Globe
GL042 Ø 11 x 19.5cm, 4.25 x 7.75"



Versailles Globe
GL044 Ø 14 x 26.25cm, 5.5 x 10.25"



Terrestrial Globe with Compass
GL019 Ø 14.5 x 21cm, 5.75 x 8.25"



Library Globe

GL047 Ø48 x 96cm, 19 x 37.75"

No Renaissance library, reception room, or merchant's office was complete without a large globe on a stand. Mapmakers and globe publishers issued new globes every year, keeping clients up to date on the latest discoveries and explorations. New trade routes, new ports or even new continents.



Classic Globe Chicago, 1887

GL055 Ø18 x 30.5cm, 7.1" x 12"



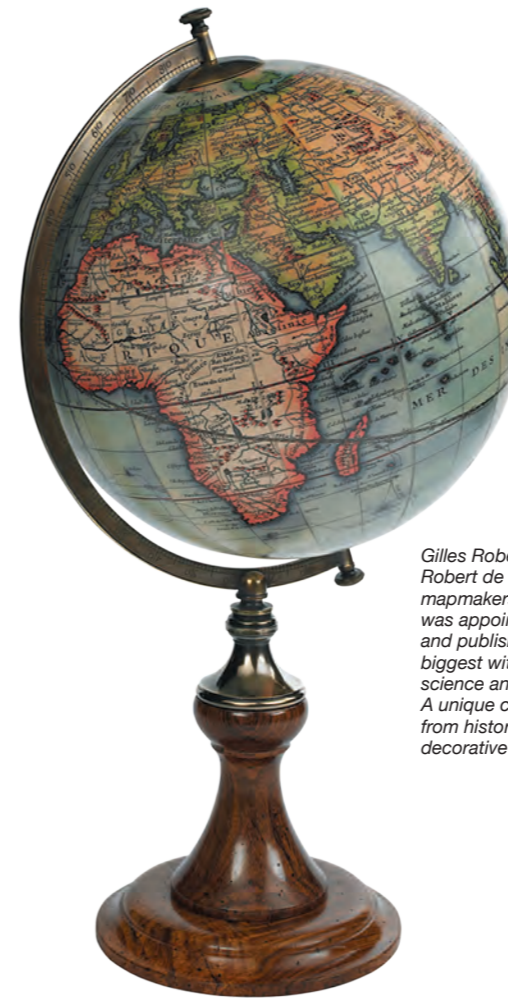
Bronze Armillary Dial

GL052 Ø 18.5 x 36.5cm, 7.5 x 14.5"



18th C. Atlas Armillary

GL051 Ø 25.5 x 56cm, 10 x 22"



Vaugondy 1745 CLASSIC STAND

GL008D Ø 34.5 x 61cm, 13.5 x 24"



Vaugondy Baroque

GL048 Ø 32 x 55cm, 12.75 x 21.75"



Mini Terrestrial Globe

GL015 Ø 12 x 22cm, 5.8 x 9.1"



Vaugondy Globe 1745

GL021F Ø 14 x 29.5cm, 5.5 x 11.75"



Atlas Globe

GL049 M. 18.5 x 20 x 34cm, 7.25 x 8 x 13.5"

Gilles Robert de Vaugondy and his son, Didier Robert de Vaugondy, were the leading mapmakers in France during the 1700s. Didier was appointed geographer to Louis XV in 1760 and published globes of various sizes, the biggest with a diameter of 2.6 meters. Carrying science and history into the world of home décor. A unique combination of classic globe replica from historical cartography with spectacular decorative stands.



Vaugondy 1745, BLACK
GL041 Ø 32 x 50cm, 12.5 x 19.75"



The world in 1921, roaring and still colonial. The Weber Costello globe is displayed on an ebonized wood stand. Colored gores are applied to the globes by hand with authentic construction and detail which transforms them into contemporary classics.

Weber Costello Globe
GL036 Ø 32 x 50cm, 12.5 x 19.75"

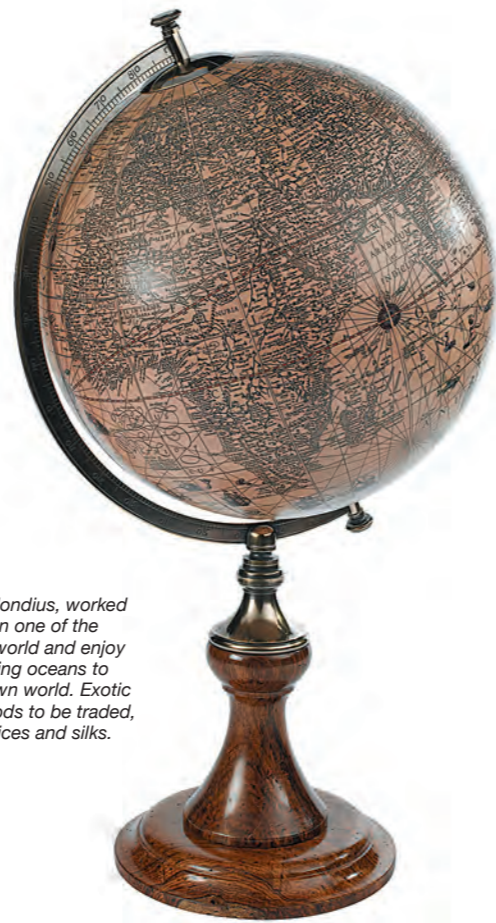


1920s Globe 32cm
GL043 Ø 32 x 50cm, 12.5 x 19.75"





Mercator 1541 CLASSIC STAND
GL002D Ø 34.5 x 61cm, 13.5 x 24"



Hondius 1627, CLASSIC STAND
GL003D Ø 34.5 x 61cm, 13.5 x 24"

Legendary cartographer, Jodocus Hondius, worked in Amsterdam during the 1600s, then one of the world's commercial hubs. Spin the world and enjoy a touch of true history. Galleons sailing oceans to the farthest corners of the then known world. Exotic cultures, languages, people and goods to be traded, bought and sold. Gold and ivory, spices and silks.



Dragon Globe
GL054 Ø32 x 53.5cm, 12.75 x 21"



Globe Base, ALUMINUM
GL200A Ø 11 x 1.5cm, 4.5 x .75"
14 or 18cm globe sold separately



Globe Base, WOOD
GL200 Ø 11 x 1.5cm, 4.5 x .75"
14 or 18cm globe sold separately



Globe Base, BRONZE
GL200B Ø 11 x 1.5cm, 4.5 x .75"
14 or 18cm globe sold separately



Stand for Globe
GL000 Ø 11 x 17.5cm, 4.25 x 7"
8.5cm globe sold separately



Tripod Stand
GL300A M. 16 x 15.5 x 20cm,
6.25 x 6 x 8"
14 or 18cm globe sold separately



Great accessory to hold any of our small globe keepsakes as it can be put in two different positions.



Vaugondy, COLOR 14cm
GL213 Ø 14cm, 5.5"



Vaugondy, BLACK 14cm
GL211 Ø 14cm, 5.5"



Vaugondy, IVORY 14cm
GL212 Ø 14cm, 5.5"



Weber Costello 18cm
GL313 Ø 18cm, 7"

Vaugondy, BLACK 18cm
GL311 Ø 18cm, 7"

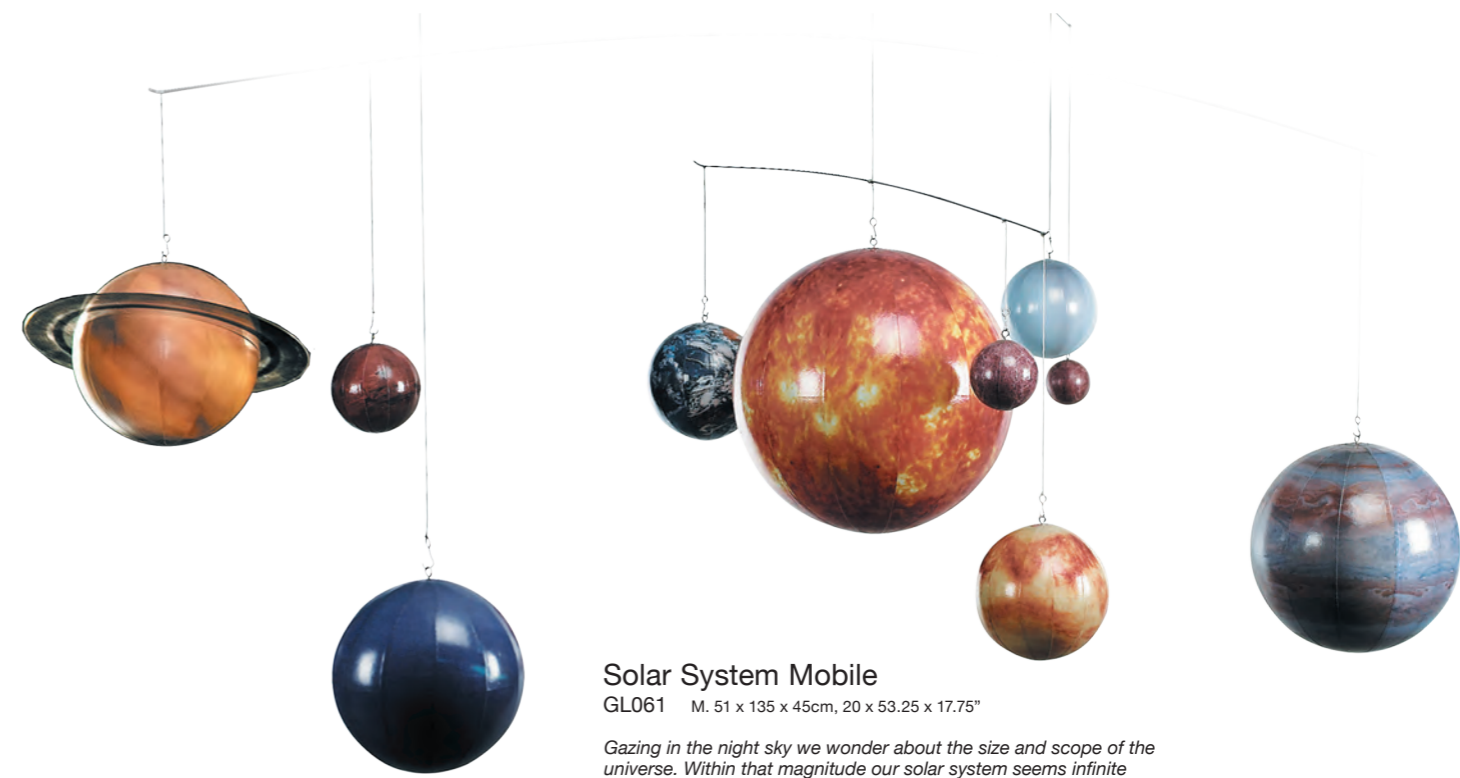
Vaugondy, IVORY 18cm
GL312 Ø 18cm, 7"



Globe Mobile

GL060 M. 108 x 18 x 90cm 42.5 x 7 x 35.5"

Five different globes from five centuries, symbolizing the advancement of cartography, the gradual pushing back of boundaries. Seemingly a magic object, many earth globes moving in perpetual circles. Different style globes in colors, hues and specifications make a fascinating and elegant object. Sure to arouse interest in planets and their clockwork movements in a curious child's mind, it may at the same time bring about sleep in a drowsy mind, watching its hypnotic pattern.



Solar System Mobile

GL061 M. 51 x 135 x 45cm, 20 x 53.25 x 17.75"

Gazing in the night sky we wonder about the size and scope of the universe. Within that magnitude our solar system seems infinite and overwhelming. It's easier to understand native creation myths, Newtonian and Galilean theories, and great historical discoveries when viewing the solar system on a smaller, more comprehensible human scale. Reduced to both scientific and decorative models of our planetary system, revolving around the sun and not the earth as early scientists believed.



LIFESTYLE

COLLECTION

Many of today's hobbies, interests, recreational activities and daily routines have evolved from fascinating pasts. Pasts that can be revisited and celebrated through objects which personify the styles and craftsmanship of those bygone eras. Authentic Models recreates the passion and pride with which our ancestors used to live their lives, through a collection of functional and decorative items which infuse historic character into modern day living.





Bantam Midget
PC011 M. 48 x 22 x 18cm, 19 x 8.75 x 7"

Spindizzies, named for the dizzying speeds they reached, were inspired by full size racecars. Handcrafted, large-scale miniatures were made by skilled owners, who often spent hundreds of hours on each car. Cherished by their owners, they now are coveted by collectors the world over. Our Bantams are truly hand tooled, traditionally die stamped body parts, in aluminum, brass and polished mahogany wood. Lift the hood; admire the replica engine. Turn the cockpit wheel and angle the front wheels. Smell the luxurious leather of the driver's seat. This is a touch of car history at its best.



Bantam Midget, RED
PC012 M. 48 x 22 x 18cm, 19 x 8.75 x 7"



BB Korn
PC013 M. 52.5 x 24.5 x 17.5cm, 20.75 x 9.75 x 7"

Technically skilled enthusiasts of the 1930s loved to race the legendary B.B. Korn cars around the club tracks. Called tether cars or spindizzies, they reached incredible speeds, and inspired thousands to improve and invent. The founder of the B.B. Korn Manufacturing Company, Barney Korn, produced several tether car models that now, as vintage antiques, achieve astounding sums at auction.



BB Korn, RED
PC013R M. 52.5 x 24.5 x 17.5cm, 20.75 x 9.75 x 7"

Hornet
PC015 M. 24.5 x 13.5 x 9.5 cm,
9.75 x 5.25 x 3.75"
Gift packaged



In the 1930s Spindizzies or Tether Cars were miniature racecars built by hobbyists which drove around banked wooden tracks at speeds approaching 150 miles per hour. Incredibly detailed and aerodynamic, these racers were beyond toys.

Indianapolis, ALU/BROWN
PC010 M. 31 x 13 x 9cm,
12.25 x 5.75 x 3.5"
Gift packaged



The famous Dooling Brothers manufactured around 1000 units of the famous Dooling spin-dizzies, miniature motorized racecars that reached dizzying speeds. They were closely modeled on the famous Mercedes Silver Arrows of the early 1930s. Originals are now rare and highly prized by collectors. Molded with the same exacting detail as its original, our racer is hand-cast in airplane aluminum. Hand polished and buffed to a high shine, it features a detailed dashboard, faux leather seat, steering wheel and brake.

Indianapolis, ALU/RED
PC010R M. 31 x 13 x 9cm,
12.25 x 5.75 x 3.5"
Gift packaged



Silberpfeil
PC014 M. 31 x 13 x 9cm,
12.25 x 5.75 x 3.5"
Gift packaged



In 1934, the international motor sport governing body specified a maximum weight for Grand Prix racing cars of 750 kg, excluding tyres and fuel. The Germans decided to reduce weight by removing the lead-based paint which denoted its cars' traditional white livery, exposing distinctive shining aluminium. Victory by one of these lead to the nickname Silver Arrow. Their successors, which were built on the same chassis, continued to race successfully at the Indy 500 after the war.

Silberpfeil, RED SEAT
PC014R M. 31 x 13 x 9cm,
12.25 x 5.75 x 3.5"
Gift packaged



Blue Racer
PC016 M. 31 x 13 x 9cm,
12.25 x 5.75 x 3.5"
Gift packaged



The Bugatti Type 51 driven to victory in the 1933 Monaco Grand Prix by Achille Varzi is an archetypal image of the early days of motor racing. Inspired by that car, we have created a handsome model to represent the era, which can also be appreciated by those loyal to other teams.

Leonardo da Vinci devised a method to portray the famous 'Platonic shapes' in perspective of which wooden models have been made during The Renaissance, representing symbols for earth and fire, water and air. They became actual symbols of learning and sophistication. Besides their metaphysical and geometric importance, the Da Vinci shapes are quintessential building blocks of matter.



Icosahedron
AR039 M. 23.5 x 23.5cm, 9.25 x 9.25"



Icosahedron, BLACK
AR039B M. 23.5 x 23.5cm, 9.25 x 9.25"



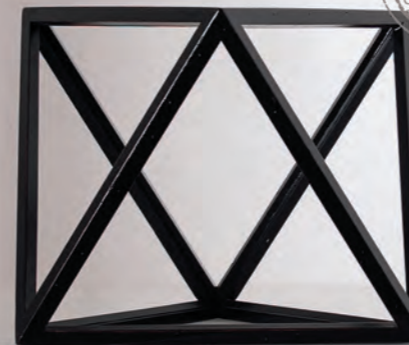
Octahedron
AR036 M. 23 x 23cm, 9 x 9"



Tetrahedron
AR035 M. 22.5 x 22.5cm, 9 x 9"



Octahedron, BLACK
AR036B M. 23 x 23cm, 9 x 9"



Tetrahedron, BLACK
AR035B M. 22.5 x 22.5cm, 9 x 9"



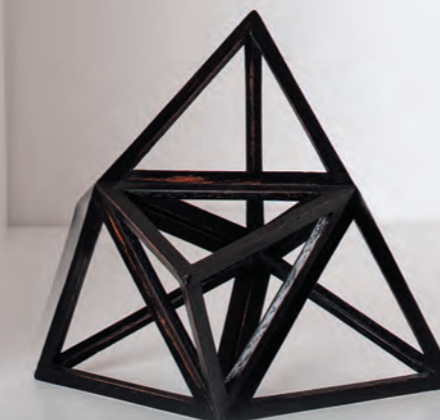
Elevated Tetrahedron
AR037 M. 21.5 x 21.5cm, 8.5 x 8.5"



Dodecahedron
AR038 M. 23 x 23cm, 9 x 9"



Elevated Tetrahedron, BLACK
AR037B M. 21.5 x 21.5cm, 8.5 x 8.5"



Dodecahedron, BLACK
AR038B M. 23 x 23cm, 9 x 9"





Spiral belltowers are the most difficult to construct. Skilled wood worker journeymen were asked to finish challenging models as a final exam before receiving their master papers. Ours is a true copy of an original version and purely handmade as well.

Bell Tower Antica
AR011 Ø 34.75 x 87.5cm, 13.5 x 34.25"



Duomo Due
AR014 M. 25.5 x 25.5 x 62cm, 10 x 10 x 24.25"



The helix spire of the 17th C. Church of the Savior in Copenhagen is a masterpiece of architecture. It has been the inspiration to this model, spiraling out from a colonnaded base surrounded by multiple porticos.

Nirvana Spire
AR041 Ø 26.5 x 55cm, 10.5 x 21.75"



Spiral Stairs
AR019 Ø 11 x 17.5cm, 4.25 x 7"



Grand Staircase
AR012 Ø 32 x 49cm, 12.5 x 19.25"



Lighthouse Steps
AR013 Ø 36 x 55cm, 14.25 x 21.75"



Authentic Models offers a small but no less fascinating collection of early stair models and architectural Models. Architects over the centuries have made models to check details and help clients understand dimensional perspectives. Many architects of renown collected models, not only for their exquisite workmanship but also for their value as décor in homes and especially offices. Authentic Models offers a small but no less fascinating collection of early stair models and dome buildings. Cherry and birch wood finished and now also in timeless black.



Obelisk Large, HONEY
AR018 M. 9 x 9 x 50cm, 3.5 x 3.5 x 19.75"



Demi-Dome
AR015 M. 46 x 25 x 41cm, 18 x 9.75 x 16"



Obelisk Medium, BLACK
AR017 M. 7 x 7 x 40cm, 2.75 x 2.75 x 15.75"



Demi-Dome, BLACK
AR015B M. 46 x 25 x 41cm, 18 x 9.75 x 16"

A true classic showing done, column and intricate double stairs details. Handmade and constructed in cherry and maple. Finished in black French finish to fit any interior.

The Duke of Malfi
MC066 M. 14.5 x 6.5 x 20.5cm,
5.75 x 2.5 x 8.25"
Gift packaged

The Duchess of Malfi
MC067 M. 8.5 x 6 x 21.5cm,
3.5 x 2.25 x 8.5"
Gift packaged

Bouffon Venice
MC068 M. 15 x 10 x 23cm,
6 x 4 x 9"
Gift packaged



One of the greatest classic theatre tragedies from English history is the story of the Duke and Duchess of Malfi. This story of a beautiful Duchess who absconds with a common lover, leaving the Palace of Pleasures. A classic and famous story that appealed to masked participants of the yearly Venetian Commedia dell'Arte season which lasted for months. Our sculptured masks represent an age when elegance and sophistication mixed with a need for secrecy and pretense. The 'Bouffon' or Jester is an unusually rich and decorative representation of one of the most ubiquitous of Venetian Carnival characters.

The Duke of Malfi
MC066 M. 14.5 x 6.5 x 20.5cm,
5.75 x 2.5 x 8.25"
Gift packaged



WS006

Time Companion

WS006 Ø 5 x 98cm,
2 x 38.5"

Our recreation of this Victorian walking stick has a wind-up watch set in the knob. Both a decorative prop and as a decorative timekeeper.



WS005

Telescope Walking Stick

WS005 Ø 5 x 98cm,
2 x 38.5"

A cleverly engineered mechanism allows the telescope to be pulled up and swiveled. Held up by the stick it can be aimed and pointed like a monocular which magnifies threefold.



Captain's Walking Stick

WS002 Ø 3.5 x 92cm,
1.5 x 36.25"

The gentlemen's walking stick has a brass knob that hides a compass, the cane a glass for a tippie.

Dandy Stand

WS000 M. 30.5cm x 7cm x 68cm,
12 x 2.75 x 26.75"



Travel Tag, LEATHER

HA029 M. 13 x 9 x 0,5cm, 5.1 x 3.5 x 0.2"

Traditionally styled travel tag. A touch of class for identifying your luggage.



Travel Wallet, LEATHER

HA028 M. 17 x 3 x 2,5cm, 6.7 x 5.1 x 1"

Traditionally styled wallet, reflecting the time when cash was king.

WS002

The walls of the workshops of Renaissance artists were filled with plaster casts of classic sculpture. Models of the human form and of horses were in demand for everyday use. Sculpted in wood, elaborately jointed and movable.

Artist Hand

MG001F Ø 10 x 25cm, 4 x 9.75"
Also available in black, MG001B



Artist Model

MG008F Ø 15 x 39cm, 6 x 15.25"
Also available in black, MG008B



Deck Prism, TRANSPARENT

AC032T

Deck Prism, GREEN

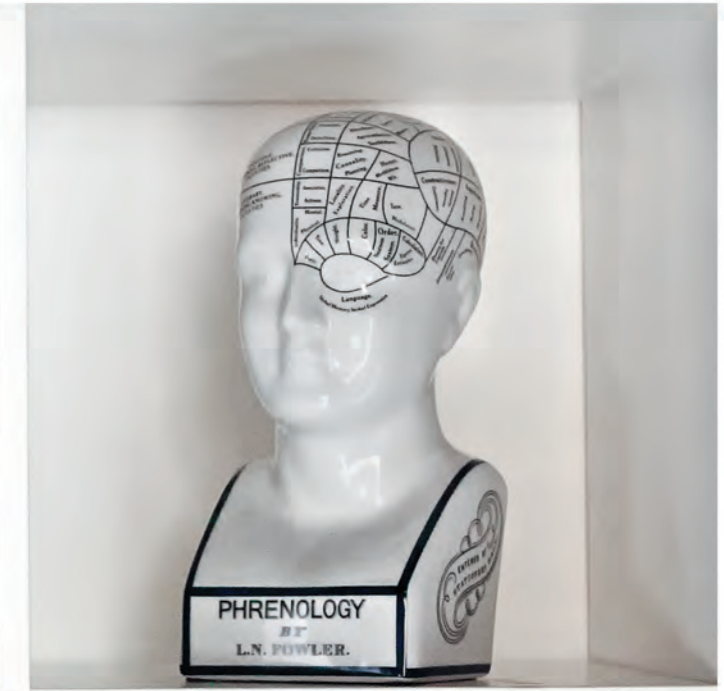
AC032 M. 12.5 x 12.5 x 11cm, 4.9 x 4.9 x 4.3"
Gift packaged



A tool of trade for the Victorian doctor's desk in crackled porcelain. A challenging gift and valuable home décor.

Phrenology Head

MG020 M. 14 x 16.5 x 29cm, 5.5 x 6.5 x 11.5"



Artist Horse, LARGE

MG006F M. 37 x 8.5 x 34cm, 14.5 x 3.5 x 13.5"



Artist Horse

MG003F M. 22.5 x 6 x 23cm, 8.75 x 2.25 x 9"



Artist Horse, BLACK

MG003B M. 22.5 x 6 x 23cm, 8.75 x 2.25 x 9"



Artist Horse, LARGE/BLACK

MG006B M. 37 x 8.5 x 34cm, 14.5 x 3.5 x 13.5"



Rocking Horse
RH006 M. 9 x 9 x 50cm, 3.5 x 3.5 x 19.75"



Rocking Horse, WESTERN SADDLE
RH006W M. 9 x 9 x 50cm, 3.5 x 3.5 x 19.75"

The classic rocking horse: no upper class children's playroom was without one. Some were mounted on oval wood rockers, others on a 'safety' stand, where steel swings allowed for greater movement on a stationary base. Our iconic rocking horse is a full-sized reproduction of originals dating back to the 19th C. Hand carved in top quality mahogany. Hand made saddle and tack of real bridle leather. The expert skills of wood carvers, cabinetmakers, and saddlers are evident. Hand finished in a warm and glowing French-style varnish, slightly distressed to make it look somewhat aged. A timeless treasure and a dream-toy for both boys and girls. Imagine its value in 50 years...





An accurate representation of one of the finest specimens of a sabre-toothed cat from the world famous La Brea Tar Pits in Los Angeles. The second most common occurring carnivore excavated from the pits which went extinct about 10,000 years ago, was adopted as the California State Fossil in 1973.



Saber Tooth Skull

AR061 M. 19.5 x 33 x 33cm, 7.75 x 13 x 13"



Buffalo Skull

AR060 M. 40 x 20 x 42cm, 15.75 x 8 x 16.5"
M. Skull (without stand) 40 x 13 x 36cm,
15.75 x 5.25 x 14.25"



Antelope Skull

AR062 M. 24 x 23.5 x 54cm, 9.5 x 9.25 x 21.25"
M. Skull (without stand) 24 x 13 x 42cm,
9.5 x 5.25 x 16"



Waikiki Surfboard

FE121 M. 195 x 50 x 18cm,
76.75 x 19.75 x 7"

Only a few craftsmen now have the skills needed to build a classic wooden surfboard. Long enough to ride the waves and short enough to casually lean into a corner of your living room.



Vintage Soccer Ball

HA022 M. 25 x 25 x 25cm,
9.9 x 9.9 x 9.9"

Before the invention of the valve around the middle of the 20th century, the air-filled bladder inside a soccer ball had to be easily accessible for re-inflation. The balls' leather casings were therefore designed with a laced opening. Our replica from the early 1900s, when the untreated leather could get heavily weighed down by absorbing water, is a poignant symbol of how the game has evolved.



Vintage Rugby Ball

HA023 M. 22 x 32 x 22cm,
8.7 x 12.6 x 8.7"

Since the game of rugby was established around 1823, the distinctive ball has existed in many different forms. Our true replica of a four-panel ball from the 1950s evokes the game's gritty passion which, almost 100 years previously, had caused America to reject it for being too violent and dangerous. Our meticulously hand stitched, high quality leather ball is an item every fan of the game will be proud to own.



Vintage Boxing Gloves, Set of 2

HA024 M. 32 x 32 x 22cm,
12.6 x 12.6 x 8.7"

Replica of 1930's style boxing gloves. Great décor for fans of the sport.



Vintage Boxing Keychain

HA025 M. 7 x 7 x 7cm,
2.8 x 2.8 x 2.8"



Vintage Rugby Keychain

HA026 M. 8 x 8 x 8cm,
3.2 x 3.2 x 3.2"



Vintage Soccer Keychain

HA027 M. 5 x 5 x 5cm,
2 x 2 x 2"

Waikiki Shelf

FE122 M. 195 x 25.5 x 18cm, 76.75 x 10 x 7"

A surfboard cut in half, serves to hold souvenirs from your beach adventures.





Belle Époque Vanity
AC094 M. 9 x 12.75 x 33cm, 3.5 x 5 x 13"

Heavy, cast aluminum porthole mirror actually opens to the one picture you loved from last year's Bahamas trip. Measuring 15 inches, this aluminum mirror has a bronze finish. An AM classic.



Cabin Porthole Mirror, MEDIUM
AC188A Ø 38 x 7cm, 15 x 2.75"



Bronze Lounge Porthole Mirror, LARGE
AC189A Ø 51 x 7cm, 20 x 2.75"



Belle Époque Vanity
AC094 M. 9 x 12.75 x 33cm, 3.5 x 5 x 13"



Victorian Vanity
AC110 M. 26.5 x 11.5cm, 10.5 x 4.5"
Gift packaged



Triple Hook
TH004 M. 12.5 x 12.5cm, 5 x 5"
Traditionally mounted on the inside of a merchant navy wardrobe cabinet. It's difficult to imagine a more practical coat hook, taking up hardly any space and offering multiple hooks to hang shirts, scarves, hats, ties, bags...



Coat Hook, BRONZE
TH003 M. 12.5 x 27.5 x 38.5cm, 4.9 x 10.8 x 15.2"

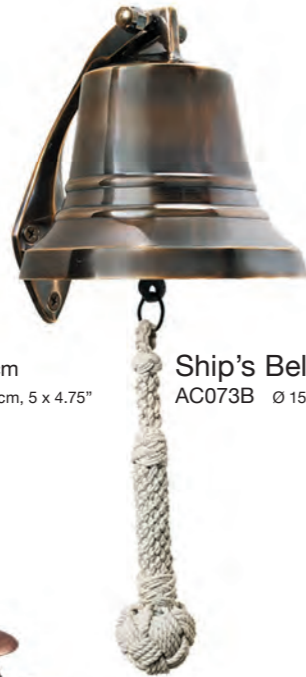


Balloon Coathook
TH006 M. 20 x 10 x 5cm, 7.9 x 3.9 x 2.0"

Ship bells are made of heavy solid brass, handmade and sand-cast. The chunky hand knotted lanyard offers years of use. We offer three sizes of bells for beach house or boat. A true nautical heirloom.



Ship's Bell, 13cm
AC072B Ø 12.75 x 12cm, 5 x 4.75"



Ship's Bell, 15cm
AC073B Ø 15 x 16.5cm, 6 x 6.5"



Ship's Bell, 20cm
AC075B Ø 20.25 x 22cm, 8 x 8.5"



Round Reception Bell
AC105 Ø 9.5 x 8.5cm, 3.9 x 3.5"



Triangle Base Reception Bell
AC107 Ø 13 x 8.5cm, 5.4 x 3.5"



Sailor's Inn Desk Bell
AC100 Ø 13 x 10.5cm, 5.25 x 4.25"



Sailor's Inn Desk Bell, SILVER
AC100S Ø 13 x 10.5cm, 5.25 x 4.25"



Sailor's Inn Desk Bell, BRONZE
AC103 Ø 13 x 10.5cm, 5.25 x 4.25"

Ring the bell on the hotel reception desk is an iconic ritual in traditional hotels, where proprietors pride themselves on providing every guest with personalised service. A symbol of the customer being King. Or Queen.



Purser's Bell
AC076 M. 15 x 24 x 20cm, 6 x 9.5 x 7.75"



Purser's Bell, SILVER
AC076S M. 15 x 24 x 20cm, 6 x 9.5 x 7.75"

In 1919, the passing of the 18th Amendment to the US constitution cleared the way for 13 years of Prohibition. While supporters referred to it as the "noble experiment", those against it actually drank more than ever. To cover up the rough taste of the poor quality alcohol which remained available, bartenders created cocktails with plenty of juices and other sweeteners. A few shakers from the era survived, and Authentic Models has reproduced these in all their beautiful detail. Decorative and fully functional!



Thirst Extinguisher
Cocktail Shaker
CS001 Ø 10.5 x 38cm, 4 x 15", 40 fl. oz.



Dumb Bell
Cocktail Shaker
CS004 Ø 12 x 26cm, 4.75 x 10.25", 32 fl. oz.



Fire Extinguisher
Cocktail Shaker
CS002 Ø 9 x 25cm, 3.5 x 9.75", 40 fl. oz.



Joy Bell
Cocktail Shaker
CS003 Ø 15 x 28cm, 6 x 11", 35 fl. oz.



King's Bottle Stopper
BA003 M. 3 x 3 x 10cm, 1.2 x 1.2 x 3.9"



Queen's Bottle Stopper
BA002 M. 3 x 3 x 10cm, 1.2 x 1.2 x 3.9"



Rum Measure Cup
AC101 M. 8.25 x 5.25 x 5.5cm, 3.25 x 2 x 2.25"



Lighthouse
Cocktail Shaker
CS010 Ø 13 x 35.5cm, 5 x 14", 72 fl. oz.



Venetian Tic-Tac-Toe
GR004 M. 22 x 33 x 3.5cm, 8.75 x 13 x 1.5"
Gift packaged



Roulette
GR025 M. 22.5 x 6 x 23cm, 8.75 x 2.25 x 9"
Being outlawed occasionally a portable roulette was invented, which was popular with officers of the Imperial Army and taken on campaign. Simplified with less numbers it still allows for fun gambling.



Throw The Dice, BRASS GR030 M. 6.5 x 6.5 x 6.5cm, 2.6 x 2.6 x 2.6"
Throw The Dice, SILVER GR031 M. 6.5 x 6.5 x 6.5cm, 2.6 x 2.6 x 2.6"
The archetypal tool of chance, dice are the oldest gaming implements known to man. They were the inspiration which eventually led to both dominoes and playing cards. Authentic Models celebrates the longevity of these simplest of implements with a beautifully decorative wooden set, which is also fully functional!



Exactly 38 hand made marbles made of at least 15 different semi-precious minerals.

The game of Solitaire was invented in the Bastille prison during the early years of the French Revolution and is played with 36 marbles. The object is to eliminate all but one marble, which should ideally end up in the center of the game board.

Semi-precious Solitaire, 30mm
GR022 Ø 35 x 9cm, 13.75 x 3.5"



A subtle finger twist sets the top on its seemingly magic tour across the curved surface of the bowl. Six tops in six colors allow players to compete for the longest spin.

Spinning Tops & Board
GR026 Ø 15 x 39cm, 6 x 15.25



Solitaire Game, 20mm
GR005F Ø 25 x 3.5cm, 9.75 x 1.5"
Gift packaged



Solitaire Di Venezia, 25mm
GR007 Ø 30 x 3cm, 11.75 x 1.25"
Gift packaged



Classic Chess Board
GR028 M. 42 x 42 x 4.5cm, 16.75 x 16.75 x 2"
GR021 Chess pieces not included

English chess master, Howard Staunton, promoted this set at the first international chess tournament in 1851. It became the competition standard known as the 'Staunton' set. Our red and ivory Grandmaster's set is for players, and for interiors of refined style that require a classic game board or table on display at all times.



Master Staunton Chess Set
GR027 King measures Ø 4.5 x 12cm, 1.75 x 4.75", board not included



Master Staunton Chess Set
GR021 King measures Ø 3.5 x 8cm, 1.4 x 3.25", board not included
Gift packaged



Enjoy our writing instruments to write real letters that impart both romance and a talent for perception along with a turn of phrase. Compose a meaningful letter that will delight. Poetry flows freely when one has a quill in hand. Nibs, wood stylus and ink included.

Feather Pen Set

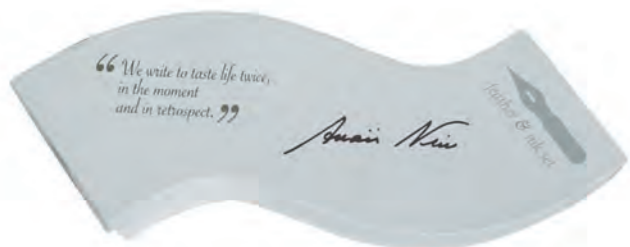
MG118 M. 8.5 x 25.5 x 6.5cm, 3.25 x 10 x 2.5"



French finish distressed, bronze hinges, secret hiding spots and special place for inkwells and styluses. A classic campaign accessory.

Campaign Lap Desk

MG076F M. 40.5 x 25.5 x 10cm, 16 x 10 x 4"



Wave Writing Set Feather, WHITE

MG303 M. 26 X 10 X 4cm, 10.8 x 4.1 x 1.6"

Reading old letters in elaborate calligraphy. Who can resist those waving and flowing lines of a hand written document.

Wave Writing Set Feather, GREY

MG304 M. 26 X 10 X 4cm, 10.8 x 4.1 x 1.6"



Windsor Prose

MG029 M. 7.5 x 29.25 x 8cm, 3 x 11.5 x 3.25"



Windsor Travel

MG127 M. 7.5 x 29.25 x 8cm, 3 x 11.5 x 3.25"



Palette For Pens 2

MG083 M. 23.5 x 9 x 7cm, 9.25 x 3.5 x 2.75"

Six classic ink colors, two glass styluses



Colorful Prose

MG084 M. 23.5 x 9 x 7cm, 9.25 x 3.5 x 2.75"

Twelve classic ink colors, two glass styluses



Trianon Travel

MG128 M. 18.5 x 26.5 x 6.25cm, 7.25 x 10.25 x 2.5"



Trianon Letters

MG059 M. 15.5 x 36.75 x 6.25cm, 6 x 14.5 x 2.5"

Enjoy the power of the written word. French finish boxes filled with inks, styluses, nibs, seal wax, sealing tools, brass and wood seals. A writer's dream.

Gadgets inspired by science were popular in Victorian times. Optical illusions and the laws of gravity seemed magical in that era. Skyhooks could be set on a shelf or the rim of a table and set in motion to everybody's delight and amazement.



Great Plains
TM011 H. 50cm, 19.75"



Mermaid
TM029 H. 50cm, 19.75"



Sun
TM033 H. 57cm, 22.4"



Signal Sailor
TM034 H. 56cm, 22"



Moon
TM035 H. 54cm, 21.25"



Salty Dog
TM036 H. 45cm, 17.75"



Pirate
TM040 M. 41cm, 16.25"



Whale
TM048 H. 57cm, 22.4"



Helmsman
TM050 H. 52cm, 20.5"



Santa on Sleigh
TM053 H. 63cm, 24.8"



Flying Ace
TM074 H. 50cm, 19.75"



Race Car
TM075 H. 65cm, 22.2"



Red Baron
TM082 M. 49.5 cm, 19.5"



Dancing Elephant
TM099 H. 67cm, 26.25"



Golfer
TM100 H. 56cm, 22"



Strike Out
TM103 H. 54cm, 21.25"



Touch Down
TM104 H. 54cm, 21.25"



Pierrot
TM106 H. 67.5cm, 26.5"



Rope Walker
TM107 H. 66.5cm, 26.25"



King
TM113 H. 61cm, 24"



Queen
TM114 H. 61cm, 24"





Jester
TM115 H. 61cm, 24"



Clown
TM116 H. 66cm, 26"



Alice in Wonderland
TM117 H. 57cm, 22.5"



Mad Hatter
TM118 H. 54cm, 21.25"



Mermaid Trade Sign, TWO SIDED
TS012 M. 66 x 73.5cm, 26 x 29"



Sun Trade Sign, TWO SIDED
TS002 Ø 57 x 7.5cm, 22.5 x 3"



Queen of Hearts
TM119 H. 57cm, 22.5"



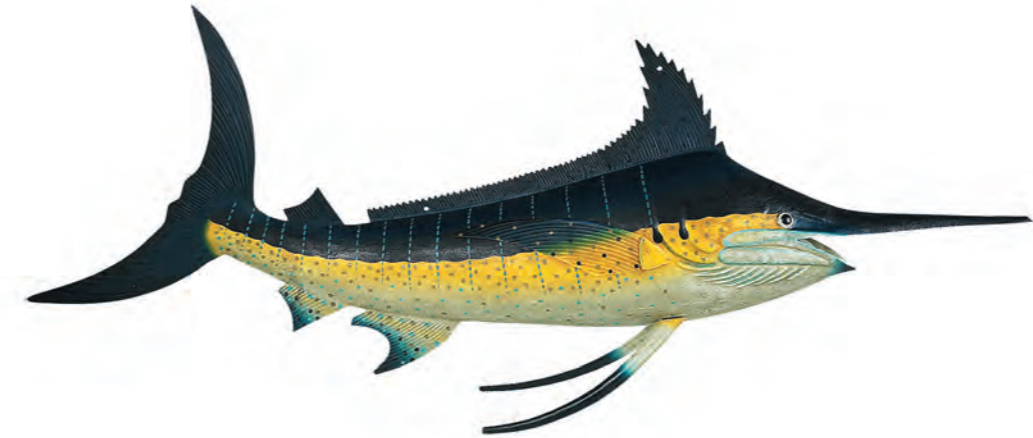
White Rabbit
TM120 H. 57.5cm, 22.75"



Aida
TM123 H. 59.75cm, 23.5"



Madame Butterfly
TM124 H. 59.5cm, 23.5"



Marlin Trade Sign, TWO SIDED
TS008 M. 125 x 20 x 60cm, 49.25 x 7.75 x 23.5"



Salmon Trade Sign, TWO SIDED
TS025 M. 110 x 15 x 41cm, 43.25 x 6 x 16.25"



Whale Trade Sign, TWO SIDED
TS029 M. 120 x 30 x 40cm, 47.25 x 11.75 x 15.75"



Princess
TM125 H. 50.5cm, 20"



Knight
TM126 H. 54cm, 21.25"



Cheshire Cat
TM127 M. 49.5 cm, 19.5"



Acrobat
TM129 H. 61cm, 24"



Bosun's Whistle

BW001 M. 13 x 2 x 1cm,
5 x 0.75 x 0.5"
Gift packaged

"All hands on deck" was one of the commands blown by the Bosun's Mates on this whistle or "call".



Victorian Whistle

BW002 M. 13 x 2 x 1cm,
5 x 0.75 x 0.5"
Gift packaged

Hand crafted brass whistle, faithful replica of Victorian original.



White Star Call

BW003 M. 13 x 2 x 1cm,
5 x 0.75 x 0.5"
Gift packaged

The White Star Shipping Line was the owner of the legendary Titanic. Our little bosun's whistle is small in size, but carries a big sound.



Gone for months or even years the return of sailors was a joyful occasion. To announce a safe homecoming a small iron or brass anchor was displayed next to the family cottage entrance.

Cape Horn Anchor

AC006 M. 15.5 x 11 x 9.5cm, 6.25 x 4.5 x 3.75"



Expert ditty work this one, made by fishermen in off-season.

Monkey's Fist/Shackle

FW003 M. 12 x 3 x 4cm, 4.75 x 1.25 x 1"



Royal Dockyard Tape Measure

KA037 M Ø 14 x 3cm, 5.8 x 1.25"

The Royal Dockyard Tape Measure - not just for the owners of classical yachts. A practical and fun gift for anyone from gardeners to ship owners. Definitely tight for the dreamer who is building a 40 ft. Schooner in the backyard. This is no mean measure.



Monkey Fist Doorstop, Cotton

HD001 M. 81 x 36 x 49.5cm, 32 x 14.25 x 19.5"

The 'monkey fist' knot, named for its resemblance to a bunched hand, was developed as a weight to make it easier to throw ropes. Our perfectly constructed hemp example is also ideal for holding doors open. Available in white or straw.



Monkey Fist Doorstop, Sisal

HD002

It's like hearing weathered old-time deck-hands sharing their special secrets. To make a ship inside a bottle, to learn the ropes, how to best send a message in a bottle. Where will the currents take it: Yokoham or Zanzibar? So many stories. Uniquely conceived and packaged. Both gift and craft, educational and whimsical. Rare fun in attractive and intriguing boxes. Easy to learn and enjoy. For inquisitive minds and keeps them busy for hours at a time...



Kaleidoscope Kit
MS073A M. 21.5 x 6.5 x 6.5cm, 8.5 x 2.5 x 2.5"

Looking for the first time through the eyepiece of a classic kaleidoscope is a lasting memory for many little ones. Easy to create, highly interactive.



Learn The Ropes
MS071A M. 13.75 x 11.75 x 2.5cm, 5.5 x 4.75 x 1"



Mariner's Compass
MS013A M. 9.5 x 10 x 3cm, 3.75 x 4 x 1.25"



Message in a Bottle
MS053A M. 20.5 x 6.2 x 6cm, 8 x 2.5 x 2.25"



A-B-Seas Stamp Set
MS050A M. 11 x 14 x 6cm, 4.25 x 5.5 x 2.25"



Billy Bosun's Stamps/Stationer
MS070A M. 14 x 10.5 x 6cm, 5.5 x 4.25 x 2.25"



Boat in a Bottle Kit
MS022A M. 14.5 x 12 x 7cm, 5.75 x 4.75 x 2.75"



Pirate's Treasure
MS057A M. 15.5 x 10 x 9.5cm, 6 x 4 x 3.75"

Build a pirate's galleon. Includes a treasure map.



Pocket Sundial Compass
MS019A M. 11 x 11 x 1.5cm, 4.25 x 4.25 x 0.75"

Our version of the earliest time telling methods. Find a sunny day and have some fun.



Compass Journal
MS010A M. 13 x 20.5 x 2cm, 5 x 8 x 0.75"



Fortune Sticks
MS076 M. 7.25 x 17.75cm, 2.75 x 7"



Three hand-stitched professional juggling balls, inviting you to toss 'em up.

It's a Toss Up
MS054A Ø 14 x 6cm, 5.5 x 2.25"



Build your own fishing fleet. Add signal flags for a fun, finishing touch.

Three Boats in a Box Kit
MS015A M. 11 x 12.5 x 4cm, 4.25 x 5 x 1.5"



Traveler's World Globe in Box
MS021A Ø 10 x 8.8cm, 4 x 3.5"



Work the Strings
MS063 M. 18.5 x 16.5 x 2.5cm, 7.25 x 6.5 x 1"



INSTRUMENTS

COLLECTION

Measuring time, assessing weather, reading maps, surveying surroundings and identifying direction are all essential abilities for intrepid explorers. Before the technological revolution, seafaring adventurers depended on robustly constructed, accurately calibrated physical instruments to safely navigate their way. Our working replicas of the compasses, visionary aids, time-pieces and weather measuring devices used by 18th and 19th century explorers give you a sense of their venturesome lives. Functional enough to put your skills to the test while beautiful enough to add characterful talking points to your home or yacht.





Commonplace in Victorian England, carriage clocks kept the mail coach and its passengers apprised of their scheduled departures and arrivals.

Carriage Clock
SC045 M. 52.5 x 24.5 x 17.5cm,
20.75 x 9.75 x 7"



Navy Clock
SC048 Ø 16 x 10.25cm, 6.25 x 4"

A classical naval WWII era timepiece, designed in accordance with military specifications. Its unusual two-piece configuration has a hinged front section that swings open to access the movement and rear-mounting bracket. The sturdy original was faithfully tended for weekly winding and regulation. With the modern movement provided, our Navy Clock's only attendant requirement is the possessor's admiration!



Porthole Clock, ALUMINUM
SC043 M. 15 x 5cm, 6 x 2"

AM branded dial, framed by a bronze porthole, opened by turning the bolt-heads. Solid, hand-cast and polished aluminum casing.



Desk Clock Wood Base
SC044 M. 24 x 10 x 10cm, 9.5 x 4 x 4"
Clock not included



Captain's Clock
SC040 Ø 18 x 6.5cm, 7 x 2.5"



Captain's Time & Tide Clock
SC042 Ø 18 x 6.5cm, 7 x 2.5"



Altitude Clock, BLACK
SC060 M. 16 x 12 x 12cm, 6.3 x 4.7 x 4.7"

The interior of a plane's cockpit may be overwhelming to most, but is an irresistible attraction for aviation fans. For those who simply can't get enough of the romance of flying, we're bringing it home in the form of a functioning clock presented to look like an altitude meter.



Propeller Clock
AP111 M. 30.5 x 9.5 x 5.5cm, 12 x 4 x 2"

During the Great War, from 1914-18, a new kind of art flourished. Hand crafted creations from gifted soldiers and army personnel became known as trench art. They used whatever material was at hand. Popular fabrications included lighters and clocks made in all shapes and sizes. Our aluminum propeller clock was probably designed by an airplane engineer at a time when aluminum was only used for engines and small parts.

From an era when one could travel the world in style!



An exact reproduction of a 1930s Art Deco flight clock. Hand cast airplane aluminum, polished. Nostalgic and chic.

Art Deco Flight Clock
AP104 M. 35.5 x 7 x 10.5cm,
14 x 2.75 x 4.25"



Collectable because of their combined historical and practical value. Ship's hourglasses were calibrated to the half hours of the ship's watch. To appreciate the important symbolism of the hourglass, Renaissance artists painted still lives, also called Vanitas, filled with symbolism and morals. They very often depict hourglasses.

Bronzed 30 Minute Hourglass

HG007 Ø 8 x 13.5cm, 3.25 x 5.25"

Silver 30 Minute Hourglass

HG007S Ø 8 x 13.5cm, 3.25 x 5.25"



Sand Timer Short 15 Minutes

SD008 M. 16.5 x 16.5 x 50cm, 6.5 x 6.5 x 7.8"



Bronzed 3 Minute Sandglass

HG001B Ø 3.5 x 9.5cm, 1.5 x 3.75"

Brass 3 Minute Sandglass

HG001 Ø 3.5 x 9.5cm, 1.5 x 3.75"

The pocket glass of the boatswain. Used to measure ship's speed, counting knots, timing minutes. A small gift with big presence.

HG001B HG001



Bronzed 30 Minute Hourglass-Stand

HG008 M. 18.5 x 13 x 25.5cm, 7.25 x 5 x 10"



Silver 30 Minute Hourglass-Stand

HG008S M. 18.5 x 13 x 25.5cm, 7.25 x 5 x 10"

The hero of this story is an anonymous watchmaker in Regency London. Trying to combine a travel clock that needs to be small while easy to read. The époque was candle light... little would he know that his spherical desk watch would be a highly collectable treasure. In times of need the lenses doubled to read maps and light the safari-cooking fire.



The Eye of Time Clock, NICKEL

SC051 Ø 5 x 8cm, 2 x 3.25"
Gift packaged



The Eye of Time Clock

SC050 Ø 5 x 8cm, 2 x 3.25"
Gift packaged



The Eye of Time Clock, LIBRARY

SC052 Ø 7.5 x 11.5cm, 3 x 4.5"
Gift packaged



SC051 clock sold separately

Stand for Eye of Time, NICKEL

GL000C width 11cm, 4.25", height 17.5cm, 7", depth 7.5cm, 3"



SC050 clock sold separately

Stand for Globe

GL000 width 11cm, 4.25", height 17.5cm, 7", depth 7.5cm, 3"



SC052 clock sold separately

Stand for Eye of Time, LIBRARY

GL000L width 13cm, 5.25", height 27.5cm, 11", depth 7.5cm, 3"



Savoy Pocket Watch

SC057 Ø 5.25 x 1.5cm, 2.1 x 0.6"

Hours that count. Collecting interesting and beautiful watches has grown into a popular pastime. Our pocket grandfather watch will hardly make a dent in your wad-of-cash. A gift for one's self or a thoughtful present for a loved one!



Victorian Pocket Watch

SC058 Ø 5.25 x 1.5cm, 2.1 x 0.6"



Porthole Eye Of Time, BRONZE

SC055 Ø 5 x 8cm, 2 x 3.25"



Victorian Dome Watch

SC054 M. 22.5 x 22.5cm, 9 x 9"

Precious moments displayed under a hand blown glass dome. French finished cherry wood base. Brass replica pocket watch.



Weather Glass, WALL PLAQUE
WG011F M. 15.5 x 8 x 42cm, 6 x 3.25 x 16.5"

King George III collected scientific instruments. Not for function, but for form and beauty. The brass arch, lightly distressed French finish base, and brass details turn this weatherglass into a work of art.



Tabletop Weather Glass
WG015F Ø 15 x 33cm, 5.75 x 13"

Since the dawn of civilization humans have tried to organize the day by the motion of the sun, moon, and stars. Shadow clocks, later named sundials, were invented by Greeks and Romans and used by explorers during our age of discovery. The sundial played a fundamental role in finding local time. Watches were notoriously unreliable and often needed to be reset by using sun-time. And up till the 20th C. each locality had its own miniature time zone, often differing in minutes only. By pointing the triangular style (gnomon) with the number 12 due North, the shadow of the style will point at the sunny hour.



Sunny Hours
CO026 M. 5.1 x 5.1 x 12.5cm, 2 x 2 x 5"



Sextant in Case
KA032 M. 15 x 15 x 8cm, 6 x 6 x 3.25"

Charming pocket sextant as used by Victorian explorers and surveyors. Intricate and semi-functional, it has all the pieces needed to shoot the sun. A sextant defined latitude. A clock longitude.



Bronze Pocket Sextant
KA030 M. 11 x 11 x 6cm, 4.25 x 4.25 x 2.25"

A popular item in the 1860s, popularised (though not invented) by Admiral Robert FitzRoy. The degree to which the liquid inside the orb crystallises is supposed to be predictive of weather conditions. See for yourself how well our scientifically accurate reproduction works!



FitzRoy Storm Glass
SD001 M. 12.5 x 7 x 19cm, 4.93 x 2.76 x 7.49"

Don't forget to check the weather before heading out to sea. More accurate than many a weatherman! 19th C. style instrument, decorative as well as interesting.



Captain's Barometer
SC041 M. 24 x 10 x 10cm, 9.5 x 4 x 4"
Stand not included

Desk Clock Wood Base
SC044 M. 24 x 10 x 10cm, 9.5 x 4 x 4"
Barometer not included



Recreation of an 1873 invention by the chemist Sir William Crookes, the vanes inside this airtight glass move when exposed to sunlight.

Crookes Radiometer
SD005 M. 13 x 13 x 30cm, 5.12 x 5.12 x 11.82"



50-Year Calendar
BC002 M. 7.5 x 2cm, 2 x 1"
Gift packaged

An early, simple pocket calculator from an era when 50 years were akin to perpetual. Its origin goes back some 500 years. Calculate the day of the week for any given future date, within a 50-year span. To use, simply rotate dial until the selected year lines up with the selected month. Locate the particular date and find the day of the week above it.



50-Year Calendar
BC006 M. 7.5 x 2cm, 2 x 1"
Gift packaged



Victorian Trails Compass
CO007 Ø 6 x 1.75cm, 2.5 x 0.75"



Polaris Compass
CO027 Ø 5.8 x 1.2 cm, 2.25 x .675"

Through centuries of technological innovation, we've charted the whole world. But early navigators and explorers setting out didn't necessarily know where they were headed. Guided only by a simple compass, the stars of the night sky, early octants and astrolabes. Possibly terrifying, but also exciting. Discover early navigation by enjoying an unbelievable collection of compasses from various eras.



Collector's Compass
CO017 M. 10.5 x 14 x 19.5cm,
4.25 x 5.5 x 7.75"

An instrument from a time when the travel was an uncertain activity at best. Pilgrims, artists, and merchants followed ancient routes without much signage to show the way. If they didn't make the next wayside inn, local convent or hospital by nightfall they might have to camp out in the open. Losing the way was a major risk in the ages before the Renaissance.



WWII Compass
CO014 Ø 5.5 x 2cm, 2.25 x 0.75"



Victorian Pocket Compass
CO029 M. Ø 5.5 x 1.5 cm, 1.45 x 0.4"



Compass Display
CO000 M. 23.5 x 29.75 x 23cm, 9.26 x 11.75 x 9"



Small Compass
CO002 M. 4.7 x 6.5 x 1.5cm, 1.75 x 2.5 x 0.5"



Pocket Compass
CO003 M. 8.5 x 10 x 1.5cm, 3.25 x 4 x 0.5"

Compasses offer the most significant message to the recipient in the smallest, most interesting package possible. It's a symbol for direction, staying the course, for adventure, discovery, science and human inventiveness. In short, it has it all...



Small Compass, BRONZE
CO002B M. 4.7 x 6.5 x 1.5cm, 1.75 x 2.5 x 0.5"



Lewis & Clark Compass
CO009 M. 7.75 x 7.75 x 2.25cm, 3 x 3 x 1"



Executive Compass
CO013 M. 9 x 9 x 4.3cm, 3.5 x 3.5 x 1.75"



Lifeboat Compass
CO015 M. 12 x 12 x 8.5cm, 4.75 x 4.75 x 3.5"



Mariner's Compass, Silver
CO019 Ø 10 x 4cm, 3.9 x 1.6"



18th C. Sundial & Compass
CO028 Ø 5.5 x 1.5cm, 2.25 x .5"



18th C. Sundial & Compass
CO012A Ø 8.5 x 2.5cm, 3.5 x 1"

An intriguing and classic explorer's and navigator's tool. The telescope consists of a wood or metal barrel holding an objective, a system of lenses. It is protected by metal collars and a decorative cap while the smallest tube holds the eye objective. To use, pull out the drawers and push in the smallest end-tube to focus.



Bronze Spyglass
KA023 M. 46 x 5.5cm, 18 x 2.25"



Silver Spyglass
KA023L M. 46 x 5.5cm, 18 x 2.25"



Bronze Spyglass & Stand
KA023F M. 54 x 17 x 11cm, 21.25 x 6.75 x 4.5"



Leather Spyglass
KA029 M. 68 x 75 x 13cm, 27.2" x 29.6" x 5.1"



Officer's Spyglass
KA036 M. 38.75 x 4.25cm, 15.25 x 1.75"



Officer's Spyglass, SILVER
KA036S M. 38.75 x 4.25cm, 15.25 x 1.75"



Binoculars were a Victorian invention and were much easier to use than the one lens drawn out telescope. Sturdy 19th C. binoculars on elegant beautifully crafted mini-tripod.

Victorian Binoculars, SILVER WITH TRIPOD
KA025S M. 16.5 x 14 x 41.5cm, 6.5 x 5.5 x 16.5"



Victorian Binoculars, WITH TRIPOD
KA025 M. 16.5 x 14 x 41.5cm, 6.5 x 5.5 x 16.5"



Victorian Binoculars
KA026 M. 16 x 12 x 5.5cm, 6.25 x 4.75 x 2.25"



After dinner, having enjoyed a chilled Chardonnay, nothing is more relaxing than observing birds and wildlife or neighbors with a tripod mounted telescope... Instrument in quality brass and stand in rich wood, with adjustable legs and solid brass fittings.

Avalon Telescope
KA038 M. 100 x 82 x 156.25cm, 39.5 x 32.25 x 61.5cm
Magnification 35X



This astonishing monocular is outfitted with complicated prismatic lenses. Its brass and nickel parts are expertly covered with hand-sewn leather, to withstand the wear and tear of daily use on campaign.

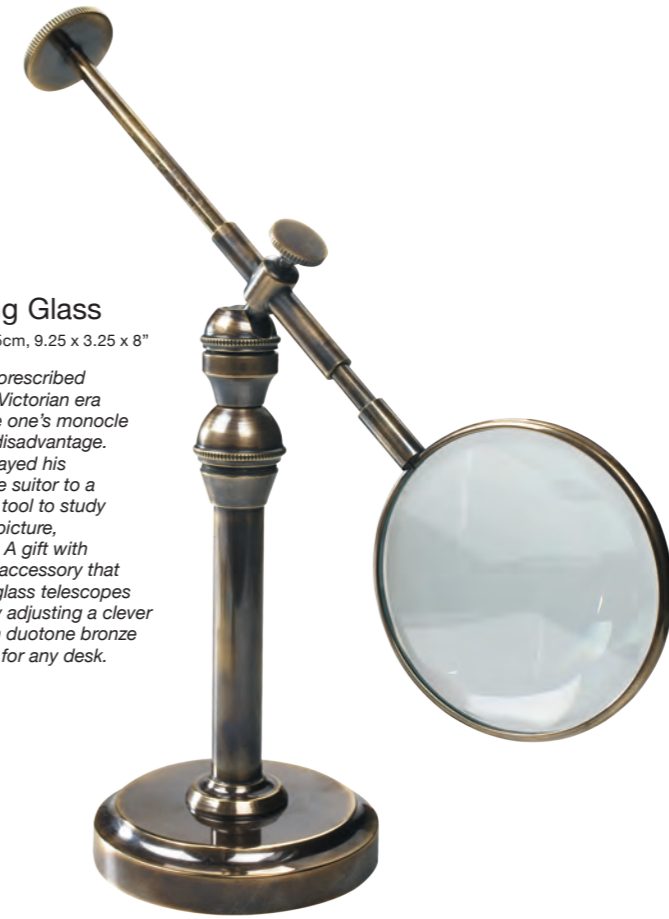
Monocular on Tripod
KA039 Ø 96 x 170cm, 37.75 x 67"
Magnification 20X



Magnifier Stand
 AC000 M. 50 x 19.5 x 39.5cm, 19.75 x 7.75 x 15.5"

Empress Reading Glass
 AC095 M. 23.5 x 8 x 20.5cm, 9.25 x 3.25 x 8"

Conversation has had its prescribed etiquette. During the late Victorian era and into the Belle Époque one's monocle served to intimidate and disadvantage. A houseguest who overstayed his welcome... an unwelcome suitor to a favorite daughter? Now a tool to study the lines on your palm, a picture, fingerprints or small print. A gift with excellent provenance, an accessory that delivers. The magnifying glass telescopes up and down. It angles by adjusting a clever ball-joint. Solid brass with duotone bronze finish, this is a must-have for any desk.



Magnifying Glass w/Stand
 AC099A M. 25 x 11.5 x 18cm, 9.75 x 4.5 x 7"



Magnifying Glass w/Stand, BRONZED
 AC099E M. 25 x 11.5 x 18cm, 9.75 x 4.5 x 7"



Magnifying Glass With Tripod
AC040 M. 16 x 16 x 25cm, 6.3 x 6.3 x 9.9"

This replica of a Victorian tripod-mounted magnifying glass has been updated to blend with modern day tastes. While the tripod construction remains true to the sturdy original, the wood used in the legs differs through being completely free of varnish or paint. Resulting in a raw, natural look that works wonderfully in today's stylish interiors.



Nickel Magnifying Glass, NICKEL
AC098 M. 32 x 8.5 x 2cm,
12.5 x 3.25 x 0.75"
Gift packaged



Regency Magnifier
AC109 M. 26.5 x 11.5cm, 10.5 x 4.5"
Gift packaged



Regency Magnifier, SILVER
AC109S M. 26.5 x 11.5cm, 10.5 x 4.5"
Gift packaged



Vintage Travel Magnifier
AC090 M. 13 x 5.5 x 1.5cm, 5.25 x 2.25 x .75"
Gift packaged



Discovery Glass
CO004 Ø 5.5 x 1.25cm, 2.25 x 0.5"



Mini Magnifier
AC092 M. 7.5 x 4.5cm, 3 x 1.75"



Magnifying Glass, BRASS
AC099 M. 25 x 10 x 2.5cm, 9.75 x 4 x 1"
Gift packaged



Magnifying Glass, SILVER
AC099S M. 25 x 10 x 2.5cm, 9.75 x 4 x 1"
Gift packaged



Magnifying Glass, BRONZED
AC099B M. 25 x 10 x 2.5cm, 9.75 x 4 x 1"
Gift packaged

Classic accessory for any coffee table or end table. Duotone bronzed brass.



Rococo Magnifier, BRONZE
AC113 M. 13 x 5.25cm, 5.25 x 2"



Rococo Magnifier, SILVER
AC114 M. 13 x 5.25cm, 5.25 x 2"



Reader's Glass
AC116 M. 22.5 x 8cm, 9 x 3.25"



Vintage Travel Magnifier
AC091 M. 17 x 6.5 x 2.5cm, 6.75 x 2.5 x 1"



INDEX

- Armillaries 100
- Balloons 80 - 83
- Bars 10, 16 - 17, 19 - 21
- Benches 46
- Bookcases 34 - 41
- Cabinets 32 - 33
- Cars 110 - 111
- Chairs 42 - 45
- Compasses 153 - 155
- Desk lamps 58 - 59
- Desks 26 - 31
- Desktop planes 76 - 77
- Dressing 36, 129
- Education 144 - 145
- Floor lamps 50 - 55
- Games 132 - 133
- Globes 98 - 104
- Globe stands 105
- Hanging lamps 56 - 57
- Hospitality 130 - 131
- Magnifiers 158 - 161
- Mirrors 128 - 129
- Mobiles 78 - 81, 91, 107
- Modern decor 78
- Nautical fun 93, 142 - 143
- Oars 94 - 95
- Plane models 62 - 69
- Propellers 70 - 75
- Runabouts 90
- Sailing ships 86 - 89, 91
- Skyhooks 136 - 144
- Steamers 92 - 93
- Stools 46 - 48
- Sundials 154, 155
- Tables 22 - 25
- Telescopes 156 - 157
- Time 148 - 151
- Tradesigns 145
- Vintage sport 126, 127
- Weather 152
- Writing 134 - 135



CONTACT

HEAD OFFICE

The Netherlands
Ambachtsweg 37
3899 AM Zeewolde
Phone +31-(0)36-52 19 191
Fax +31-(0)36-52 19 170
sales.eu@authenticmodels.com

SALES OFFICES EUROPE

BELGIUM

AM Belgium
Phone +32-(0)2-24 56 750
am-belgium@authenticmodels.com

FRANCE

AM France
Phone +31-(0)36-52 19 197
sales.eu@authenticmodels.com

GERMANY

AM Germany
Phone +31-(0)36-52 19 173
sales.eu@authenticmodels.com

ITALY

AM Italy
Phone +39-(0)35-910 827
am-italy@authenticmodels.com

SPAIN

AM Spain
Phone +34-93 81 24 366
am-spain@authenticmodels.com

SWEDEN

AM Sweden
Phone +46 704 22 21 82
sales.eu@authenticmodels.com

SWITZERLAND

AM Switzerland
Phone +41-792 21 19 56
sales.eu@authenticmodels.com

UNITED KINGDOM

AM UK
Phone +44-(0)1403-734 999
am-uk@authenticmodels.com

SALES OFFICE UNITED STATES

888 Garfield Street
P.O. Box 21710 Eugene,
OR 97402
Phone 541-686-4666
Toll-Free 800-888-1992
Fax 541-686-5111
sales.usa@authenticmodels.com

Showroom USA

Space #13-D-7; E-3A
40 John Portman Blvd. NW
Atlanta, Georgia 30303

SALES OFFICE AUSTRALIA

AM Living Australia
Ground Floor
390 Mount Alexander Road Ascot Vale
VIC3032 Australia
Phone 61-03-9326-0140
info@amliving.com.au

JOIN US ONLINE

instagram.com/authentic.models
facebook.com/AMAuthenticModels
pinterest.com/am7394

#AUTHENTICMODELS
SHARE YOUR FAVORITES WITH US

AUTHENTICMODELS.COM

Visit our new website and stay informed
of the latest collection.



Copyright

No part of this publication may be reproduced in any manner of form whatsoever without the prior written permission of Authentic Models and other copyright holders. No rights can be derived from this publication.

Disclaimer

Authentic Models makes every effort to maintain the accuracy and quality of the information provided in this catalogue. However, Authentic Models cannot guarantee and assumes no legal liability or responsibility for the accuracy or completeness of the information provided.

It is important to bear in mind that the colours shown in this catalogue may not be accurate representations of the actual colours of the items. The colour reproduction in this catalogue should only be used as a rough guide for selecting item colours.

Unique products

Some products in the Authentic Models collection are handcrafted from natural materials. This means products are rarely completely identical and may show variance in colour, size or finish. We believe this aspect adds to the value and quality of these products. Small irregularities in shapes, surfaces and finishes are hallmarks of hand-craftsmanship and should not be considered defects.

